

VOLLINTINE EVERGREEN

N E W S

A Neighborhood Publication Sponsored by VECA, the Vollintine-Evergreen Community Association

Volume XXVI, Number 6

NOVEMBER 2000

UPCOMING MEETINGS & COMMITTEES

Unless otherwise marked, all of these meetings are at the VECA office at 1680 Jackson. To be certain, you can call first at 276-1782. Committee meetings and Board meetings are open to everyone.



Historic Home Holiday Tour	December 10
VECA Block Club Reception & General Membership Meeting	January 22, 2001 (tentative)
Potluck Supper & Pool Party	July 14, 2001 (tentative)
National Night Out	August 7, 2001
Historic Committee	second Monday monthly, 7:00 p.m. (call office for location)
Block Club Committee	first Monday monthly, 6:00 p.m.
Code Enforcement Committee	first Saturday monthly, 9:00 a.m.
V&E Greenline Committee	third Monday monthly, 7:00 p.m.
Cypress Creek Beautification Committee	third Tuesday monthly, 6:00 p.m.
Managing Committee	Tuesday before third Saturday monthly, 7:30 a.m.
Housing Committee	second Tuesday monthly, 5:30 p.m.
Commercial Revitalization Committee	second Thursday monthly, noon
Brown/Howell Block Club	second Thursday monthly, 6:30 p.m. (Cypress Junior High School)
Youth Committee	
VENews deadlines:	February 2, April 6, June 1, August 3, October 5, November 30
VECA & CDC Board	December 4, 7:00 p.m.
VECA Board	first Monday monthly, 7:00 p.m.
VECA Board	November 6, 7:00 p.m.
VECA Board	January 8, 7:00 p.m.
VECA CDC Board	fourth Saturday monthly, 9:00 a.m.
VECA CDC Board	November 25, 9:00 a.m.
VECA CDC Board	January 27, 9:00 a.m.

HOLIDAY HOME TOUR DECEMBER 10



On Sunday, December 10, from 3:00 p.m. to 8:00 p.m., the Historic Committee will host "Homes for the Holidays". Festivities begin at St. John Orthodox Church (1663 Tutwiler), where all-inclusive tour tickets can be purchased for \$7. There will be photos with Santa on the V&E Greenline from 3:00 p.m. to 5:00 p.m. From 4:00 p.m. to 8:00 p.m., a free trolley will take guests on rides through "creatively lighted" streets to tour 5 homes decorated with various themes of Christmas villages, Kwanza, and old-fashioned country and Victorian-style scenes. Hot chocolate will be available while guests listen to groups of carolers. Other activities sponsored by various committees will include an opportunity to buy a matted, personalized write-up of your historic Vollintine-Evergreen home. To obtain additional information about the event or to arrange advanced ticket purchases, contact Historic Committee member Samantha Ownby at 272-3244.

WANTED: DEDICATED VOLUNTEERS FOR OUR TWO BOARDS

At the general membership meeting each January, Vollintine-Evergreen residents elect their representatives to the VECA Board, as well as the VECA president and vice-president. All terms are for one year, so the entire Board is voted upon. This year, as has been the case every year in the past, some current Board members are willing and able to stand for election again, while others need to be replaced.

The VECA Board appoints the CDC Board. Those terms are for two years. So the CDC Board will have some members continuing, but there will also be vacancies.

The VECA Board ordinarily meets at 7:00 p.m. on the first Monday of each month, and the CDC Board ordinarily meets at 9:00 a.m. on the fourth Saturday of each month. Board members usually also serve on one committee. If you are interested in being nominated to one of the Boards, need additional information, or know someone who would be able to contribute their time and talents, contact any VECA staff person or any member of either Board.

THE MARGARET DICHEL AWARD

Margaret Dichtel was one of the founding members of VECA and its first president. She strongly believed that neighbors working in a community organization could accomplish together what they as individuals or government could not. Her faith in the value of neighboring and the importance of grassroots community action remains the VECA philosophy.

The Margaret Dichtel Award is presented annually to a Vollintine-Evergreen resident and VECA member who embodies the principles of neighboring and community action. There is no specific length of membership required and the awardee need not be an officer. The awardee will be an individual who strengthens relationships between community members, tackles problems that threaten the integrity of the community, makes the neighborhood a better place to live, improves VECA's image city-wide, and demonstrates a commitment to the neighborhood and the concept of a neighborhood.

Each nomination must be by a current dues-paying member of VECA and should consist of a letter stating the candidate's contributions and achievements. Send nominations by December 31 to the Nominating Committee, care of the VECA office.

THE RICHARD BORYS AWARD

Richard Borys moved to the Vollintine-Evergreen community in 1975 and served as president of the Vollintine-Evergreen Community Association and on various committees in the early years of the organization. Despite dying young at the age of 44, Dick's life was an example of public service. Dick came to Memphis as a VISTA volunteer. He helped design and start the Memphis City and Shelby County Pre Trial Release Program. In 1976 he was awarded the outstanding service award from the Memphis and Shelby County Bar Association for his contributions to the Criminal Justice System. At the time of his death Dick was a vice president at the Regional Medical Center ("The Med").

Dick was active with his children in soccer, coaching up to three teams at a time. He was a member St. Therese Little Flower Church, located at the center of the Vollintine-Evergreen community. Clearly, Richard Borys served the community in his work, in the neighborhood, at church, and through his children, Claire, Alex and Pete. Dick's wife Julie M. Borys still resides in Vollintine-Evergreen and has herself served as VECA president and active volunteer over the years. She currently is on the VECA CDC Board of Directors.

The Richard S. Borys Award was created to recognize public officials who through their work contribute to the Vollintine-Evergreen community. The awardee need not be a Vollintine-Evergreen resident or a VECA member.

Each nomination must be by a current dues-paying member of VECA and should consist of a letter stating the candidate's contributions and achievements. Send nominations by December 31 to the Nominating Committee, care of the VECA office.

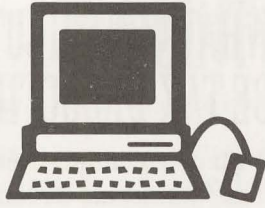
Dichtel Award

1988	Martha Heinemann
1990	Julie Borys
1991	Mike Kirby
1993	Mary Wilder
1995	Willette Gray & Gloria Singleton
1996	Rhodes College & The Terry Circle Block Club
1997	Linda Nichols
1998	Steve Gadbois
1999	Charlotte & Pete Swailes
2000	Sherry Henson & Belinda Kersch
2001	???

Borys Award

1991	Steve Shular
1992	Vernua Hanrahan
1995	Janis Foster
1996	William Stemmler
1997	Charles Cook
1998	Barbara Swearengen Holt
1999	Carol Chumney
2000	Wayne Risher
2001	???

**VISIT
VECA'S WEBSITE**
www.neighborhoodlink.com/veca



VECA & VECA CDC STAFF

Sean Fegette,
Construction Coordinator

Ruth Gibson,
Homeowner Counselor and
Office Manager

Belinda Kersch,
Brown & Howell
Community Organizer

Daryl Lewis,
Neighborhood Preservationist

Steve Shipp,
Economic Developer

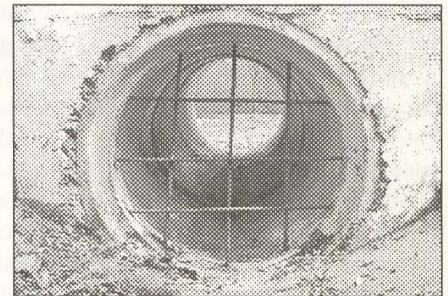
Wilma Vandermeer,
Financial Manager

VECA CDC VAN FOR SALE

VECA CDC is selling a 1992 Plymouth Voyager van with about 105,000 miles. It was owned by a generous, long-time neighborhood leader who will donate the entire proceeds of its sale to VECA CDC. It is clean and well-maintained; the only improvement it could benefit from is a paint job. For more information about the van, call or stop by the VECA office.

UNIVERSITY CIRCLE AND HALLWOOD UNITE

A rash of breakins earlier this year caused residents of University Circle and Hallwood to mobilize. With help from the media (especially Channel 5), City Council members (especially Myron Lowery and Rickey Peete), and city officials (especially Director of Public Works Jerry Collins), a drain pipe that appeared to be a primary access point was secured.



**V&E GREENLINE COMMITTEE COMPLETING
LICK CREEK BRIDGE**

by Bill Rehberg

If you walk along the V&E Greenline you may have noticed the large concrete objects on each side of Lick Creek between Evergreen Street and Auburndale Street. These are not barricades, monuments or headstones. They are the support piers for the long-overdue Lick Creek Bridge. After long negotiations with the city to secure "air rights" over Lick Creek, we are finally moving forward — the placement of the support piers was just the first step.

The V&E Greenline Committee caught a huge break on the next step, the actual assembly of the bridge itself. Rob Keeler of Keeler Iron Works lives in the neighborhood; he and his brother Will graciously offered the help of their company in welding together the joists, bracing, and siderails that make up the main structure of the bridge. This will leave only the wood decking which will be installed on the assembled bridge by neighborhood volunteers at Keeler Iron Works on October 28 (while this newsletter is in press). The hardware used to attach the decking to the bridge is being donated by Active Bolt & Screw. Then the entire bridge (67 feet long by 6 feet wide, weighing 5 tons) will be set on the piers by Barnhart Crane & Rigging. It should be quite a sight. Call the VECA office IN EARLY NOVEMBER if you'd like to be notified of either the dramatic installation-by-crane of the completed bridge or the dedication ceremony shortly thereafter.

ALTERNATIVE CHRISTMAS MARKET

On Sunday November 12, from 12:00 to 3:30 p.m., Trinity United Methodist Church at 1738 Galloway will offer handmade gifts including toys, jewelry and holiday decorations from Third World craftspeople, and the profits will be returned to them. Children can make gifts to take home. A baked potato lunch will be available.

TRASH

Spring and Fall are times for clean-up and fix-up. Many of us are making plans to get some work done that had to await cooler weather. It is sad to see all the fallen limbs and dead plants and shrubbery which resulted from the long drought this summer. Here are some reminders for all who live along the V&E Greenline, between Springdale and Watkins.



The V&E Greenline is private property. It is being maintained by hard-working volunteers who donate their time for the good of the neighborhood. It is a source of daily pleasure and relaxation for many and has greatly enhanced the image of our beautiful neighborhood in the eyes of the community. The Greenline was a no-man's land and a blight for many years. During those times, there was an accumulation of trash along its sides and along back fences. There have been numerous clean-up campaigns since the neighborhood acquired this right-of-way for use as a neighborhood park. We even had the Marines volunteering to help with this. We found an unbelievable array of items, ranging from old toilets to tires to pieces of junk cars and wire mattresses. All the accessible junk has been hauled away. New homeowners in this neighborhood cannot imagine what it was like!

Fallen limbs and large shrubbery thrown over back fences is unsightly and develops into a breeding ground for rodents and, worse, into a fire hazard. The waste does not decompose, but it becomes tinder-box dry over the years and even a small spark can ignite it. This has happened already in our neighborhood. It is a very scary experience. **DO NOT THROW YARD DEBRIS OVER YOUR BACK FENCE.** If you are having back fence work done, please insist as part of the deal that the contractor move any cut shrubbery right up to the curb at the nearest end of the Greenline. Please take all large yard debris to your own front curb. We are very fortunate in Memphis to have excellent city services to pick up yard waste on a regular schedule. In many other cities, this would require special arrangements and extra costs to the owner.

If you have new building debris, or if you discover to your dismay that there still is old trash hiding along your own property line, please make appropriate arrangements to have it removed. Forget that there is a Greenline behind your home — it's no longer an option for dumping. Now, trash has to go to the curb, or you have to arrange for a dump truck yourself. **DO NOT DUMP BUILDING TRASH, OLD OR NEW, ON OUR NEIGHBORHOOD V&E GREENLINE.**



DEALING WITH LEAVES

Don't leave your leaves to blow into neighbors' yards, and don't let them accumulate in the streets where they'll eventually clog storm drains or wash away to rob waterways of life-sustaining oxygen. Instead, they can be mulched back into your lawn with a mulching lawnmower, composted for later use, or bagged for regular pickup. Both mulching and composting are easy, cheap, and earth-friendly. And now bagging for pickup is nearly as good — last year the city's Earth Complex produced over 6000 tons of compost from bagged leaves.

WHAT CONTRIBUTIONS MAY BE TAX-DEDUCTIBLE?

Many Vollintine-Evergreen residents make annual tax-deductible contributions to United Way, which funds various worthy causes here in Memphis and Shelby County. Most donations are unrestricted, which United Way allocates to agencies providing much needed services. Last year VECA CDC received a one-time grant to support a neighborhood environmental project.

Through the United Way campaign, donors have the opportunity to make a "directed gift" to United Way for a specific cause or for a specific agency of the donor's choice. VECA CDC is one such agency. On the other hand, VECA itself is NOT such an agency, so **DON'T DESIGNATE YOUR GIFT TO VECA,** donate instead to VECA CDC.

Remember, VECA was established in 1971 as a 501(c)4 tax-exempt organization, which allows it to lobby but prohibits it from receiving tax-deductible contributions; VECA CDC was established in 1995 as a 501(c)3 tax-exempt organization, which allows it to receive tax-deductible contributions but prohibits it from lobbying.

VECA CDC's United Way and Combined Federal Campaign donor number is 5377. This number can be written on United Way's donor forms to direct the donation the VECA CDC. To further direct the donation (to a specific project or committee, such as the V&E Greenline or Blocks Clubs), notify the VECA office.

BEVERLY'S COMPUTER SIGN GRAPHICS: YOUR NEIGHBORHOOD SIGN SHOP

Earlier this year you may have noticed a change at 1435 Jackson Avenue, just east of Watkins. Beverly's Computer Sign Graphics is now open to meet any of your signage needs. President is Arthur Shipp. Stop by or call 272-0151.



VOLLINTINE-EVERGREEN NEWS CARRIERS

Thanks to all who are involved in the free door-to-door delivery of the Vollintine-Evergreen News:

Nancy Abernethy	Susan & Tom Fagan	Michael Johnson	Marina Pacini
David Adams	Fredha Feaster	Belinda Kerusch	Sue Penn
Lance Andrade	David & Dolores Flagg	Tom & Betsy Kirby	Mary Frances Pitts
Kris Arheart	Steve Gadbois	Melanie LaRue	Gertrude Rhodes
Vincent Beckford	Ada Gasta	Anne Laulederkind	Jessie Rodgers
Linda Bennett	Shaundra Glass	Robert Lenzini	Tom Schrodt
Ava Bishop	Celia Graham	Keith Lowe	Lois Scott
Jackie Walls Blair	Beulah Green	Allan Lummus	Bill & Angela Segui
Peter & Julie Borys	Mary Harris	Alfreda McKinney	Peggy Stevens
Kay Bradford	Martha Heinemann	Michael & Nancy McMullan	Linda Stewart
Lanetha Branch	Sandy Holmes	Othniel Marquet	Sandy Talley
William & Charlsie Brasfield	Jack Hough	Jim & Suzanne Martin	Clara Terrell
Jan Bullard	Marie Humphreys	Pam & Troy Mashburn	Carol Thomas
Bob Busby	Earnestine Isabel	Lois Mayfield	Richie & Wendy Trenthem
Bill Campbell	James Ivy	Lester & Rue Middleworth	Barbara Truly
Valerie Clay	Jan Jamison	Molly Miller	Doris Tunstall
Len Cobb	Gaynell Jennings	Steve Moore	Regina Walker
Carol Danehower	Bettye Johnson	Roland & Bernetta Nash	Bob Watkins & Janet Harris
Ella Mae Edwards	George & Helen Johnson	Bill Newberg	Mary Wilder & Chuck Fox
Helen Evans			

The following Vollintine-Evergreen News routes are all that remain to be covered. Call the VECA office to volunteer to deliver for about half an hour once every two months, or to let us know that regular delivery is not taking place on some street not on this list:

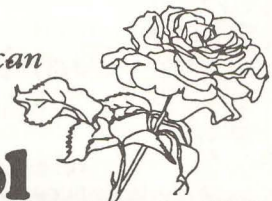
Alameda, Ramona to Springdale (20)	Faxon, Watkins to Stonewall (41)	Springdale (west side),
Albany, Ramona to Springdale (20)	Garland, Jackson to Henry (52)	Vollintine to Brown (14)
Auburndale, Jackson to Vollintine (31)	Hawthorne, Vollintine to Brown (20)	Stonewall, Tutwiler to Jackson (31)
Avalon, Jackson to Henry (30)	Henry, Trezevant to Springdale (14)	Trezevant (west side), Jackson
Avalon, Henry to Vollintine (32)	Henry and Charles Place Cove,	to Vollintine (30)
Belvedere, Edward, and	west of Springdale (14)	Tutwiler, Stonewall to Evergreen (50)
Rosebud Circle (30)	Howell, Cypress Creek to Springdale (35)	Vollintine, Maury to Evergreen
Charles Place, Jackson to north end (16)	Jackson (north side), Springdale	Watkins (both sides),
Cypress Drive and Cypress Circle,	to Trezevant (15)	Vollintine to Cypress Creek (24)
Jackson to Springdale (14)	Piedmont, Ramona to Springdale (20)	Watkins (both sides),
East Drive, Jackson to Vollintine (30)	Ramona, Albany to Piedmont (22)	Jackson to Vollintine (52)
Faxon, Avalon to Evergreen (40)		

*Are you new to the
Vollintine-Evergreen neighborhood?*

Come by the VECA office at
1680 Jackson Avenue during regular
business hours to pick up a free
"welcome packet". It's loaded with
information, coupons, and a form for a
free first-year membership in VECA.

Thank You

*As always, call me if I can
help you — 327-8528*



Carol
Chumney
State Representative-District 89

Paid for by The Chumney Campaign; Oran Quintrell, Coordinator

OPEN DOOR BIBLE CHURCH

1792 North Parkway
 Memphis, TN 38112 (901) 278-4311
Gary D. Starbuck, Pastor
Nursery Available
 Sunday Services: 10:45 am and 6:00 pm
*"A common people
 with an uncommon love"*

Wells Fargo Home Mortgage



RENOVATION LOANS ARE OUR SPECIALTY

Leigh Anne Segerson, CRS
 Office: (901) 753-2371
 Voice Mail: (901) 751-8477



CALL ME TODAY

- Finance purchase & renovation of shells!
- Purchase or Refinance...it's one loan!
- 1 to 4 family residential dwellings allowed!
- Finance major or minor improvements to home!
- FHA, Conventional & Jumbo Financing!

St. Therese Little Flower Catholic Community Jackson at Belvedere

Sunday Eucharists
 8:00 a.m., 10:30 a.m.

Saturday Vigil Mass - 4:30 p.m.
 Tues. and Thurs. Mass - 5:30 p.m.
 Wed. and Fri. Mass - 8:15 a.m.

Saturday Confession - 3:45 - 4:15 p.m.



"All Are Welcome"

276-1412

McLean Baptist Preschool

Full service child care at affordable prices
 Licensed for children 15 months and up
 Before and after school transportation with
 child care for Snowden and Volland Schools



Full day summer and holiday program
 for school age children

Now enrolling for all programs
 815 N. McLean • 274-9440

*School's Out.
 Do you know where
 your kids are?*

EVERGREEN HAS YOUR SOLUTION.

AFTERSCHOOL PROGRAM:
 Safe and fun for K-8 students, Monday-Friday 2:15-6:00pm

SCHOOL'S OUT PROGRAM:
 Most city school holidays 7:30am-6:00pm

SUMMER SPOT: The cool midtown day camp
 for K-junior high, Monday-Friday 7:30am-6:00pm

EVERGREEN PRESBYTERIAN CHURCH
 613 UNIVERSITY AVENUE (ACROSS FROM RHODES COLLEGE)

DAY CARE AVAILABLE



For 3 and 4
 years old

REGISTER NOW!

Trinity Preschool
 1738 Galloway Ave. 274-6895

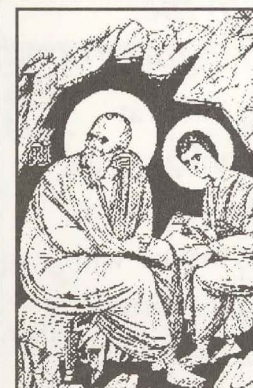
A Ministry of Trinity United Methodist Church

The Church Of The Good Shepherd

A Traditional Episcopal Church
 1928 Prayer Book

MASS - 7:30 A.M. & 10:30 A.M. SUNDAY
 HOLY EUCHARIST - 10:30 A.M. WEDNESDAYS
 (NURSERY AT 10:30 SUNDAY)

1971 JACKSON AVENUE AT UNIVERSITY AVENUE
 901-725-9768



St. John the Evangelist Orthodox Church

Sunday
 Orthros at 9 am • Liturgy at 10 am

Weekdays
 Wednesday Vespers at 7 pm
 Saturday Great Vespers at 7 pm

1663 Tutwiler Avenue at Dickinson
 (901) 274-4119

STONEWALL'S NATIONAL NIGHT OUT

by Gloria Fulton

"And the Lord is the one who goes ahead of you. He will be with you. He will not fail you nor forsake you. Do not fear, or be dismayed."
(Deuteronomy 31:8)

The Stonewall Block Club met on National Night Out, August 8, at the home of Atoosie and Linda Fulton. Neighbors, family, and friends formed a partnership with God as we lit candles, sang praises, and gave thanks and adoration on the front lawn as the sun shown down upon us. We became more than a physical family — we became a spiritual family. Prayer is a privilege that stimulates our confidence and ability to act. Officers Fields and Teal came by afterward for support, and both made notes of some of our concerns.

We look forward to more neighborhood participation and fellowship in 2001.



HUMES MIDDLE SCHOOL "CAMP PEACE"

by Norman Ray Redwing, Jr.

I want to personally thank you for all of the blessings that you have provided for our children at Humes Middle School and their families. I also want to thank you for allowing me the opportunity to serve. Your generosity and love for God's lost and found, especially the young people who live in poverty, continues to radiate joy in the hearts of many, especially me.

These children and youth are seeking an opportunity as well as an honest path to success and spiritual development. Many of the youth that you provide for are good students who are willing to work for what they need. Painfully, many of these youth are also experiencing hardships and tragic circumstances at home and in their communities. In spite of these painful times, these youth are willing to walk by faith and not by sight; they are growing spiritually, academically, and physically, and are beginning to serve other community children and youth.

I am preparing for the holidays, which means we will need your support. This year we would like a commitment from Vollintine-Evergreen residents for socks, underwear, soap, toothpaste, toothbrushes, school supplies, books and dictionaries, even new or gently-used bikes. Gift certificates (especially from Walmart) are always useful. We also welcome help with shopping and time spent with children at Humes. We have over 890 children at Humes Middle School, and are preparing to help more than half of them. This will not happen without your help. Your gifts, time, and most of all love are truly a blessing to us all.

RHODES COLLEGE CELEBRATES ANOTHER ANNIVERSARY

In 1998 Rhodes College marked the 150th anniversary of its founding as the Masonic University of Tennessee, in Clarksville (now site of Austin Peay State University). This year Rhodes is celebrating the 75th anniversary of its move as Southwestern Presbyterian University in Clarksville to Southwestern at Memphis. At its September 24, 1925 opening here, the college had 406 students and seven buildings. Much of the stone (from a quarry in Bald Knob, Arkansas) and other original building material was delivered directly onto campus by a short spur of the railroad line that cut through the Vollintine-Evergreen neighborhood, the line that has now been converted into the V&E Greenline.

This fall's events included the annual Kinney Fair on August 24, during which students signed up for various community service projects; opening convocation on August 25, which featured Memphis Mayor W.W. Herenton; completion of a Habitat for Humanity house by the Rhodes chapter, its fourth house since 1988; and homecoming weekend October 20-22.

IMPROVING THE PARKWAYS

The Memphis Park Commission is pleased to announce plans to restore the forested medians of Memphis's historic Parkway system. Thanks to funding in the amount of \$405,000 (\$324,000 from the state and \$81,000 from the city), Memphis has the opportunity to begin large-scale restoration.

The scope of the project is significant. Every tree within the medians along North, East, and South Parkways has been evaluated by a licensed arborist, whose report was then verified by a horticulturist and a landscape architect from the Division of Park Services. The arborist identified trees in need of removal (dead or otherwise dangerous), as well as healthy trees in need of pruning. New trees will be planted to replace those that are removed. The plans have been approved by the Tennessee Historical Commission, the U.S. Department of the Interior Fish and Wildlife Service, and Memphis Heritage.

Removal and pruning should take place this fall and replanting should begin this winter. Ultimately, more new shade trees will be planted than the number of shade trees removed. This restoration is identified as a priority in the Master Plan, which provides strategic initiatives for the next 20 years. Once this project is accomplished, our historic Parkways — established in 1902 — will be safer and more beautiful.

If you have questions, call Mike Lemm, Planning and Development, at 454-5244.

VECA NEEDS MEMBERS

Name _____

Telephone Day: _____ Telephone Evening: _____

Address _____ Zip _____

MAIL TO: VECA TREASURER, 705. N. BELVEDERE, MEMPHIS, TN 38107

I'M INTERESTED IN:

- Block Club
- Historic Home Tours
- Housing
- Code Enforcement
- Commercial Revitalization
- Greenways
- V&E Greenline
- Youth
- Newsletter Delivery
- Newsletter Writing
- Volunteer (general)

MEMBERSHIP DUES ARE \$10, \$20 OR \$35 PER YEAR
AND ARE NOT TAX DEDUCTIBLE; ADDITIONAL DONATIONS TO VECA CDC MAY BE TAX DEDUCTIBLE

PLEASE CHOOSE ONE:

- \$10 dues, Individual
- \$20 dues (household), Gold Star members receive their choice of bumper sticker.
- \$35 dues, Gold Star Heritage members receive their choice of bumper sticker and the Historic Designation Plaque.
- Bumper Sticker A 
- Bumper Sticker B 
- Historic Designation Plaque 

Complete Banking Services

Regions Bank

1-800-REGIONS

MEMBER FDIC



errand angels

errands · housesitting · research

901.722.8467 | errandangels.org

If You're Looking For That Favorite Little Neighborhood Bar—Stop By And See Us At

Alex's Tavern

1445 Jackson Ave. • 278-9086

Proud To Be A Part Of The VECA Neighborhood For Over 40 Years—Since 1953!

- Coldest Beer In Memphis
- Great Burgers
- Four Big-Screen TV's & Satellite Sports

Voted "Best Jukebox In Memphis" And "Best Bar In Memphis"

Celebrating 25 years in the industry!



SOWELL & COMPANY
REALTORS

Call us today so we can show you the silver lining in buying or selling your home.

54 N. Cooper Memphis, TN 38104 (901) 278-4380 sowellco@bellsouth.

VECA

VOLLINTINE-EVERGREEN COMMUNITY ASSOCIATION

VECA is a neighborhood organization made up of volunteers and paying members. The Vollintine-Evergreen News is the way in which VECA communicates with its residents. The Vollintine-Evergreen News contains information about VECA, neighborhood residents, and business and government policies. VECA is bounded by Watkins on the West, Cypress Creek on the North, Springdale on the East and North Parkway on the South. Contact VECA by writing to 1680 Jackson Avenue, Memphis, TN 38107 or call (901) 276-1782.