

VOLLINTINE EVERGREEN

N E W S

A Neighborhood Publication Sponsored by VECA, the Vollintine-Evergreen Community Association

Volume XXVII, Number 1

JANUARY 2001

JANUARY 22 IS VECA'S ANNUAL MEETING

All Vollintine-Evergreen residents are invited to VECA's annual meeting to be held Monday, January 22, at Evergreen Presbyterian Church (613 University Street). Though VECA hosts various other events during the year, this event is the most important for laying the foundation for a productive year. The new VECA Board and its officers will be elected, the new VECA CDC Board will be introduced, and both the Dichtel Award and Borys Award will be presented. Besides business, there will be good food, entertainment, and a chance to talk with old and new neighbors. Call the VECA office if you have any questions or would like to assist.

UPCOMING MEETINGS & COMMITTEES

Unless otherwise marked, all of these meetings are at the VECA office at 1680 Jackson. To be certain, you can call first at 276-1782. Committee meetings and Board meetings are open to everyone.



VECA Block Club Reception & General Membership Meeting	January 22
Potluck Supper & Pool Party	July 14 (tentative)
National Night Out	August 7
Fall Festival	September 29 (tentative); September 30 raindate
Historic Committee	second Monday monthly, 7:00 p.m. (call office for location)
Block Club Committee	first Monday monthly, 6:00 p.m.
Code Enforcement Committee	first Saturday monthly, 9:00 a.m.
V&E Greenline Committee	third Monday monthly, 7:00 p.m.
Cypress Creek Beautification Committee	third Tuesday monthly, 6:00 p.m.
Managing Committee	third Tuesday monthly, 7:30 a.m.
Housing Committee	second Tuesday monthly, 5:30 p.m.
Commercial Revitalization Committee	second Thursday monthly, noon
Brown/Howell Block Club	second Thursday monthly, 6:30 p.m. (Cypress Junior High School)
Youth Committee	
VENews deadlines:	February 2, April 6, June 8, August 3, October 5, December 5
VECA CDC & VECA Boards	first Monday monthly, 6:30 p.m. & 7:00 p.m.
VECA CDC & VECA Boards	January 8, 6:30 p.m. & 7:00 p.m.
VECA CDC & VECA Boards	February 5, 6:30 p.m. & 7:00 p.m.
VECA CDC & VECA Boards	March 5, 6:30 p.m. & 7:00 p.m.



Homes for the Holidays Holiday Lights & Home Tour

HOLIDAY HOME TOUR A SUCCESS

On Sunday, December 10, 2000 the Historic Committee held the neighborhood's first Holiday Home Tour. The entire community was involved and the activities included photos with Santa on the Greenline tractor, sponsored by the V & E Greenline Committee. The Block Club Committee sold hot beverages and cookies to visitors.

The festivities began with a tour of St. John Orthodox Church (1663 Tutwiler) and continued with a trolley ride through creatively lighted streets to each of the four homes featured on the tour: 706 Dickinson; 1003 Terry Circle; 1019 Terry Circle; 1874 Raibow Drive. Each home was decorated with various themes from victorian Christmas villages to Kwanzaa.

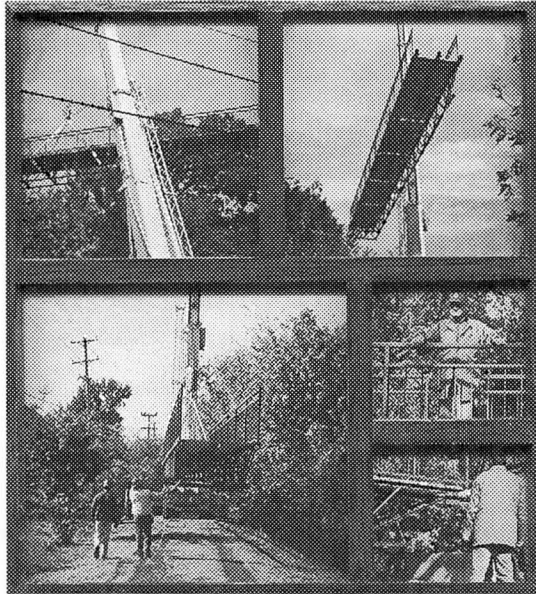
Holiday lights lined the trolley route throughout the neighborhood. Terry Circle was delightfully adorned with an assortment of white lights and lighted trees making the evening magical.

Thanks to all homeowners, volunteers, docents and everyone who made the event special.

Jan 2001
Jan 2001

LICK CREEK BRIDGE: A REALITY

On November 17, a cold, clear Friday morning, a 100 ton crane lumbered onto the V&E Greenline at Auburndale Street. Then, as interested neighbors congregated, a truck from Keeler Iron Works arrived carrying our 70 foot long bridge. The crane crew carefully set the outriggers needed to stabilize the crane so it could lift the 10,000 pound bridge around the powerlines and over the tops of the bordering trees while two men directed its progress with massive ropes attached to both ends. After a few tense moments the structure we have been working toward for over a year and a half was set gently on the concrete support piers. With less than an inch to spare it could hardly have fit more perfectly, and with its forest-green metal rails and natural wood deck it blends seamlessly into the scenery. Will Keeler stayed until after dark attaching the bridge to its piers.



No VECA funds were needed in this major project, thanks to the efforts of members of the V&E Greenline Committee. Keeler Iron Works provided materials at cost and donated thousands of dollars worth of skilled labor in the construction phase. Barnhart Crane and Rigging donated the crane and crew time, worth \$2100.

So the bridge is there but the job is far from done. Our next big task is to complete access ramps on each end of the bridge. We are considering several options for completing these, based on both cost and aesthetics. We still have some minor cosmetic touches left, and in the spring we will have to seal the wood decking. A structure of this type will always require ongoing maintenance and we hope any neighborhood resident using the bridge will let the V&E Greenline Committee know of any maintenance issues they discover. If we work together to avoid vandalism or other intentional damage, the bridge will be there for generations after us.

Sometime around February we hope to have an official dedication ceremony at which we will unveil a bronze plaque thanking all our generous benefactors. Hopefully we will know the date in time to let everyone know through the Vollintine-Evergreen News!

WHAT'S NEXT?

The Tennessee Parks and Greenways Foundation recently awarded the V&E Greenline Committee \$2000 to plan another bridge, this one over West Creek near Woodmont Towers.

LOST: a pair of black-framed glasses on the V&E Greenline, perhaps near the Lick Creek bridge. Call 276-6178.



VISIT
VECA'S WEBSITE

www.neighborhoodlink.com/veca

VECA & VECA CDC STAFF

Scott Banbury,
Cypress Creek
Environmental Educator

Sean Fegette,
Construction Coordinator

Steve Gadbois,
Executive Director

Ruth Gibson,
Homeowner Counselor and
Office Manager

Belinda Kersch,
Brown & Howell
Community Organizer

Daryl Lewis,
Neighborhood Preservationist

Steve Shipp,
Economic Developer

Wilma Vandermeer,
Financial Manager

**Open Door Bible Church
Student Ministries**

**Coming Event:
AWANA Grand Prix**



Pine Wood Derby 3/10/2001
Call Steve Miller for Information & Car Kit
Phone: 278-4311

7th - 12th Youth Group & College Ministry
Sunday Services **Wednesday Nite**
 Bible Study Hour 9:30am AWANA Kids Club
 Worship Service 10:45am Pre-K - 12th Grade
 Evening Service 6:00pm 6:45pm - 8:30pm

Wells Fargo Home Mortgage

RENOVATION LOANS ARE OUR SPECIALTY



Leigh Anne Segerson, CRS
Office: (901) 753-2371
Voice Mail: (901) 751-9477



- Finance purchase & renovation of shells!
- Purchase or Refinance...it's one loan!
- 1 to 4 family residential dwellings allowed!
- Finance major or minor improvements to home!
- FHA, Conventional & Jumbo Financing!

**CALL ME
TODAY**

**St. Therese
Little Flower Catholic Community
Jackson at Belvedere**

Sunday Eucharists
8:00 a.m., 10:30 a.m.

Saturday Vigil Mass - 4:30 p.m.
Tues. and Thurs. Mass - 5:30 p.m.
Wed. and Fri. Mass - 8:15 a.m.

Saturday Confession - 3:45 - 4:15 p.m.

276-1412



"All Are Welcome"

McLean Baptist Preschool

Full service child care at affordable prices
Licensed for children 15 months and up
Before and after school transportation with
child care for Snowden and Vollentine Schools



Full day summer and holiday program
for school age children

Now enrolling for all programs
815 N. McLean • 274-9440

*School's Out.
Do you know where
your kids are?*

EVERGREEN HAS YOUR SOLUTION.

AFTERSCHOOL PROGRAM:
Safe and fun for K-8 students, Monday-Friday 2:15-6:00pm

SCHOOL'S OUT PROGRAM:
Most city school holidays 7:30am-6:00pm

SUMMER SPOT: The cool midtown day camp
for K-junior high, Monday-Friday 7:30am-6:00pm

EVERGREEN PRESBYTERIAN CHURCH
613 UNIVERSITY AVENUE (ACROSS FROM RHODES COLLEGE)

DAY CARE AVAILABLE



For 3 and 4
years old

**REGISTER
NOW!**

Trinity Preschool
1738 Galloway Ave.

274-6895

A Ministry of Trinity United Methodist Church



**The Church
Of The
Good Shepherd**

*A Traditional Episcopal Church
1928 Prayer Book*

MASS - 7:30 A.M. & 10:30 A.M. SUNDAY
HOLY EUCHARIST - 10:30 A.M. WEDNESDAYS
(NURSERY AT 10:30 SUNDAY)

1971 JACKSON AVENUE AT UNIVERSITY AVENUE
901-725-9768



**St. John the Evangelist
Orthodox Church**

Sunday
Orthros at 9 am • Liturgy at 10 am

Weekdays
Wednesday Vespers at 7 pm
Saturday Great Vespers at 7 pm

1663 Tutwiler Avenue at Dickinson
(901) 274-4119

RECEIVING FEDERAL GOVERNMENT PAYMENTS

Chances are, you have better things to do than make trips to deposit or cash your Federal payment check. Now you have other choices. If you receive Social Security, Supplemental Security Income, Veterans benefits, Civil Service salary, Civil Service Retirement payments, Railroad Retirement payments, or Military Retirement payments, you now have four ways to get your payment:

— DIRECT DEPOSIT

You can sign up to have your payment automatically deposited to your checking or savings account at a bank, savings and loan, or credit union. You won't have to worry about your check getting lost or stolen and you won't have to wait in long lines. Just ask where you already have an account.

— ELECTRONIC TRANSFER ACCOUNT (ETA)

You can open a special new, federally insured account for automatic deposit of your Federal payment at a participating bank, savings and loan, or credit union. As with direct deposit, you won't have to worry about your check getting lost or stolen and you won't have to wait in long lines. Call 888-382-3311 toll-free to find out where you can open an ETA.

— BENEFIT SECURITY CARD

You can have your payment automatically deposited to an account you access with a Benefit Security Card. The card is a debit card that can be used in some stores and at some ATMs. Call 800-720-9670 toll-free to find out more or to sign up.

— CHECK

You can receive your payment by check in the mail. This may still be cheaper than using direct deposit, an ETA, or a Benefit Security Card.

To learn more, contact the agency that pays you, toll-free:

Social Security: 800-772-1213

Veterans Affairs: 877-838-2778

Office of Personnel Management: 888-767-6738

Railroad Retirement Board: 800-808-0772

COMMUNITY GARDENS

by Eric Rogers,

Community Garden Project Coordinator

VECA has a long tradition of strong grassroots projects bringing real change to the community. As a neighborhood, we once again have such an opportunity: community gardening.

The number of community garden programs has been on the rise since the 1980s. They have been shown to be effective vehicles of change, improving any neighborhood that has them.

In the spring of 2000, VECA planted its first community garden under this initiative. Unfortunately, there was virtually no interest in this garden. Furthermore, the site was less than perfectly suited for gardening.

We plan to try again this spring, but with more realistic ideas. We hope to establish a new garden at Vollentine School, and involve students from the school in a hands-on learning experience, emphasizing each and every skill it takes to run a successful garden.

Our plans remain tentative, and cannot be realized without community support. SO WE WANT YOUR HELP! We need help of all sorts — from accounting and finance to crop rotation and pest control. If you have any interest, please contact Steve Shipp at the VECA office.

August 25, 2000 • United Way's "Day of Caring 2000"



FedEx employees on Cypress Creek Bike Trail (east end) sitting on rebuilt picnic table.

Are you new to the Vollentine-Evergreen neighborhood?

Come by the VECA office at 1680 Jackson Avenue during regular business hours to pick up a free "welcome packet". It's loaded with information, coupons, and a form for a free first-year membership in VECA.

Interiors By Fulton



**Specializing in
Wall Murals**

Stylized, Customized Acrylic Painting

Gloria Fulton (901) 272-3845

Thank You

As always, call me if I can help you — 327-8528



Carol Chumney
State Representative-District 89

Paid for by The Chumney Campaign; Oran Quintrell, Coordinator

UPDATE FROM VECA CDC

After serving since midsummer on an interim basis, **Dr. Steve Gadbois** is VECA CDC's new Executive Director. Having a great staff already in place is making Steve's transition a fairly smooth one. (His new position leaves open the volunteer positions of coordinating editor and distribution manager of this bimonthly newsletter. Call the VECA office if you can make a long-term commitment to help with either.)

Ruth Gibson is VECA CDC's longest-serving employee. She still serves as Office Manager, but has also developed skills as a Homeownership Counselor that are well recognized across the entire city and even by H.U.D. officials in Nashville and Atlanta. Each year she helps literally hundreds of people qualify for a first home, learn what homeownership entails, or get back on track when in danger of losing the home they're in. Ruth has been out of the office due to serious illness since late October — the rest of the staff looks forward to her return!



Steve Shipp is VECA CDC's Economic Developer and is responsible for the striking improvements to "Watkins Square", a six-bay commercial strip on Watkins just north of Brown that the CDC acquired in 1998. As this newsletter goes to press, exterior work at Watkins Square is wrapping up, and interior work — most notably an expansion and redesign of Melanies Restaurant — should begin to soon. Steve has raised major funds for the project, and then stretched those funds as far as possible.

Daryl Lewis is VECA CDC's Neighborhood Preservationist, the person responsible for property acquisition. Funding is now available for about ten rehab and/or new construction projects in the year 2001; anyone volunteering to serve on the Housing Committee should find the year pleasantly busy. Daryl also plays an important role in code enforcement.

Sean Fegette is VECA CDC's Construction Coordinator. His job includes architectural design and the selection and supervision of rehab and construction contractors. Thus, he and Daryl Lewis work closely together on VECA CDC's housing projects. Taking advantage of his architectural training, Sean also played a major role in design of the new Lick Creek bridge.

Wilma Vandermeer, C.P.A., is VECA CDC's part-time Financial Manager. In her one day a week at the office (usually Thursday), she always manages to make sense out of the financial chaos the rest of the staff creates during the other four days. Her skills are invaluable.

Belinda Kersch continues as part-time Brown & Howell Community Organizer. That small area of Vollintine-Evergreen just east of Cypress Junior High School and west of Springdale has long been distressed; while much improvement is still needed, even a quick drive-through makes apparent that much has been done, thanks largely to Belinda. Homes have been built or rehabbed by VECA CDC, Habitat for Humanity, and private developers (a sure sign of health).



Scott Banbury is the new part-time Cypress Creek Environmental Educator. Look for more on his work in area schools early in 2001.



VECA CDC HOUSING

Members of VECA CDC's Housing Committee are very much aware of the concerns of many residents about particular properties. Some are not well maintained. Although they are not always in violation of building codes, they may be unsightly, and everyone wants their street to look good and to feel safe and comfortable. The CDC has often been asked to buy and improve homes in order to maintain the integrity of surrounding ones. Sometimes certain sections of the community are of special concern, and we would like to be able to address this issue as well.

We would like our friends and neighbors to be aware of some of the restraints that limit our options. It would be wonderful if we could purchase all of these properties, but the amount of money available each year limits the number that can be done, and there are usually strings attached to federal funds and other grants. If the CDC buys a property in which someone is living, intending to do major rehab or replacement, the CDC would have to provide equivalent housing until the job is completed, and funds are insufficient for that.

The CDC will continue to identify and purchase vacant lots and unoccupied houses as money permits. You and your neighbors can help by suggesting such properties and assisting with some of the research on owners, status of back taxes, etc. The VECA spirit is what keeps our neighborhood the desirable place that we want it to be.

VECA NEEDS MEMBERS

Name _____

Telephone Day: _____ Telephone Evening: _____

Address _____ Zip _____

MAIL TO: VECA TREASURER, 705. N. BELVEDERE, MEMPHIS, TN 38107

I'M INTERESTED IN:

PLEASE CHOOSE ONE:

- Block Club
- Historic Home Tours
- Housing
- Code Enforcement
- Commercial Revitalization
- Greenways
- V&E Greenline
- Youth
- Newsletter Delivery
- Newsletter Writing
- Volunteer (general)

MEMBERSHIP DUES ARE \$10, \$20 OR \$35 PER YEAR AND ARE NOT TAX DEDUCTIBLE; ADDITIONAL DONATIONS TO VECA CDC MAY BE TAX DEDUCTIBLE

- \$10 dues, Individual
- \$20 dues (household), Gold Star members receive their choice of bumper sticker.
- \$35 dues, Gold Star Heritage members receive their choice of bumper sticker and the Historic Designation Plaque.
- Bumper Sticker A
- Bumper Sticker B
- Historic Designation Plaque



Complete Banking Services

Regions Bank

1-800-REGIONS

MEMBER FDIC

Beverly's Computer Sign Graphics
"Your Neighborhood Sign Shop"

President Arthur Shipp
1435 Jackson Avenue • 272-0194

banners, yard signs, garage sale signs, addresses and mailboxes

If You're Looking For That Favorite Little Neighborhood Bar—Stop By And See Us At

Alex's Tavern

1445 Jackson Ave. • 278-9086

Proud To Be A Part Of The VECA Neighborhood For Over 40 Years—Since 1953!

- Coldest Beer In Memphis
- Great Burgers
- Four Big-Screen TV's & Satellite Sports

Voted "Best Jukebox In Memphis" And "Best Bar In Memphis"

Celebrating 25 years in the industry!

SOWELL & COMPANY
R • E • A • L • E • S • T • A • T • E

Call us today so we can show you the silver lining in buying or selling your home.

54 N. Cooper Memphis, TN 38104 (901) 278-4380 sowellco@bellsouth.

VECA

VOLLINTINE-EVERGREEN COMMUNITY ASSOCIATION

VECA is a neighborhood organization made up of volunteers and paying members. The Vollintine-Evergreen News is the way in which VECA communicates with its residents. The Vollintine-Evergreen News contains information about VECA, neighborhood residents, and business and government policies. VECA is bounded by Watkins on the West, Cypress Creek on the North, Springdale on the East and North Parkway on the South. Contact VECA by writing to 1680 Jackson Avenue, Memphis, TN 38107 or call (901) 276-1782.