

# VOLLINTINE EVERGREEN

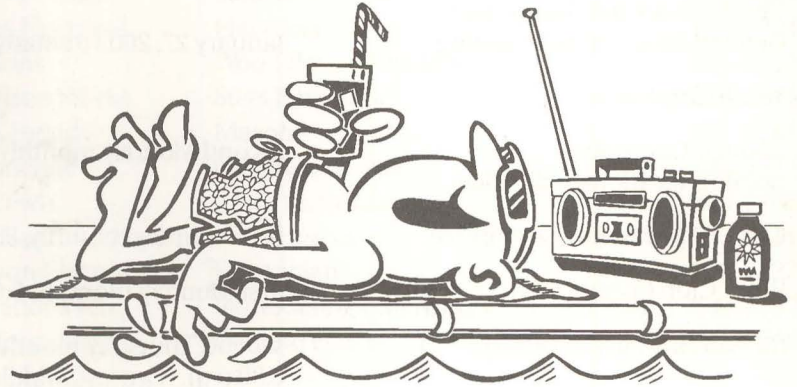
**N E W S**

A Neighborhood Publication Sponsored by VECA, the Vollintine-Evergreen Community Association

Volume XXVIII, Number 4

JULY 2002

## POTLUCK SUPPER AND POOL PARTY JULY 13



Mark your calendars, and join many of your neighbors for great food and water fun on Saturday, July 13, at the Rhodes College pool. The potluck supper will start at 6:00 p.m. and the pool will open at 7:00 p.m. The event is free. Just bring swimsuits and a dish to share (the more people you bring, the larger the dish!). VECA will provide eating utensils and soft drinks. If the weather doesn't cooperate, the event will move indoors.

---



## NEED ASSISTANCE SAVING FOR A HOME?

VECA CDC has received a grant to fund an Individual Development Account (IDA) program.

Participating individuals who save regularly in a designated bank account and accumulate \$500 will receive \$1,000 towards the purchase of their first home.

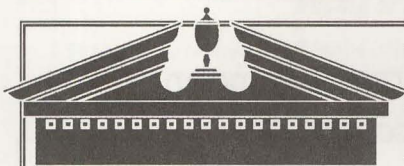
If you work full-time and are considering purchasing your first home, call the VECA office to learn more and to see if you qualify. The intake interview process is already underway, so contact us immediately!

## UPCOMING MEETINGS & COMMITTEES

Unless otherwise marked, all of these meetings are at the VECA office at 1680 Jackson. To be certain, you can call first at 276-1782. Committee meetings and Board meetings are open to everyone.

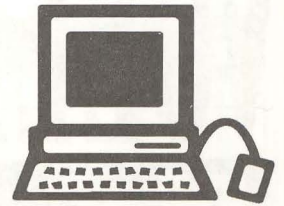


Potluck Supper & Pool Party	July 13
National Night Out	August 6
VECA Block Club Reception & General Membership Meeting	January 27, 2003 (tentative)
Youth Committee	
Historic Committee (various locations; call office)	second Monday monthly, 7:00 p.m.
Code Enforcement Committee	first Saturday monthly, 9:00 a.m.
Block Club Committee	first Monday monthly, 6:00 p.m.
Brown/Howell Block Club	second Thursday monthly, 6:30 p.m. (Cypress Middle School)
Cypress Creek Beautification Committee	third Tuesday monthly, 6:00 p.m.
V&E Greenline Committee	third Monday monthly, 7:00 p.m.
Housing Committee	second Tuesday monthly, 5:30 p.m.
Commercial Revitalization Committee	second Tuesday monthly, 5:30 p.m.
Managing Committee	last Monday monthly, 5:30 p.m.
VENews deadlines, 2002:	August 2, October 4, December 2
VECA CDC & VECA Boards	first Monday monthly, 6:30 p.m. & 7:00 p.m.
VECA CDC & VECA Boards	July 1, 6:30 p.m. & 7:00 p.m.
VECA CDC & VECA Boards	August 5, 6:30 p.m. & 7:00 p.m.
VECA CDC & VECA Boards	September 9, 6:30 p.m. & 7:00 p.m.



## FOR SALE BY VECA CDC

- 2135 Howell: new all brick, 3-bedroom, 2-bathroom house (completed)
- 2122 Brown: new all brick, 3-bedroom, 2-bathroom house (completed)
- 2162 Brown: new all brick, 3-bedroom, 2-bathroom house (completed)



## VISIT VECA'S WEBSITE

[www.neighborhoodlink.com/veca](http://www.neighborhoodlink.com/veca)

### VECA & VECA CDC STAFF

Scott Banbury,  
Cypress Creek Environmental  
Educator

Cameo Crawford,  
Rhodes College student intern

Sean Fegette,  
Construction Coordinator

Steve Gadbois,  
Executive Director

Ruth Gibson,  
Homeowner Counselor and  
Office Manager

Belinda Kersch,  
Brown & Howell Community  
Organizer

Daryl Lewis,  
Neighborhood Preservationist

Chris Orejel,  
Commercial Revitalization VISTA

Wilma Vandermeer,  
Financial Manager

Andrew Wilkins,  
Property Code Coordinator

## VOLLINTINE ↔ EVERGREEN N E W S

1680 JACKSON AVE • MEMPHIS, TN 38107

Coordinating Editor ..... Ron Bright

Finance ..... Sherry Henson

Graphic Designer ..... Diamond Printing Company

Printer ..... Fredha Feaster

Distribution ..... Fredha Feaster

Submissions can be submitted on paper (even handwritten),  
on disk, or by email to [VECA\\_news@yahoo.com](mailto:VECA_news@yahoo.com)

276-1782 VECA • 276-1783 VECA-CDC • 276-1784 fax

email: [VECA@netten.net](mailto:VECA@netten.net)  
[www.neighborhoodlink.com/veca](http://www.neighborhoodlink.com/veca)



## THANKS...

to members of the Block Club Committee, for planning and conducting a wonderful Festival on April 28, and to Snowden School, for allowing us to use the school's gym and field;

to members of the Historic Committee, for their most successful Historic Home Tour yet, held on April 28;

to Randy Kehne and Insurex Benefits Administrators, Inc., for the donation of two computers;

to Lynn and Hugh Dunlap, for the donation of two computers;

to Rhodes College, for the donation of six computers;

to Tom and Helen Schrodtt, who donated to VECA and the Public Library an original copy of the 1924 Memphis City Plan;

to David Bates for doing yard upkeep at 1505 Jackson (a duplex and well-known drughouse that VECA CDC will rehab as soon as permitted under state law);

to six men in Shelby County's Community Corrections Workline program, who spent several days cleaning out 1505 Jackson and preparing the site of the next V&E Greenline bridge;

to staff at the Mayors Citizen Service Center, for organizing the May 13 Clean Sweep in the Brown & Howell area.

## LOOKING FOR A CONTRACTOR?

Here is an alphabetical list of contractors and tradespeople who, in VECA CDC's subjective opinion, have demonstrated competency and who have expressed a desire to work in the Vollintine-Evergreen area.

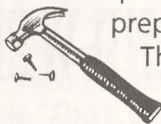
ASPA Remodeling	Home improvement contractor	337-7444
Baron Enterprises	Home improvement contractor	301-3655
Oscar Cordova	Plumber	553-8881
Gus Iron Works	Steel fabricator	942-1242
Higgins Electrical	Electrician	818-0004
Ivy & Sons	Wood floor refinishing	301-8438
Keeler Iron Works	Steel fabricator	947-4816
Mike Kennedy	Mason	921-0149
LCI Concrete	Concrete worker	795-3310
Terry Lewis	Lawn technician	360-1486
M&W Heat and Air	HVAC technician	323-1811
Patterson Electric	Electrician	382-2227
Renovations Plus	Remodeling / alarm system installation	634-8797
Solid Foundation	General contractor / lead contractor	382-6200

VECA CDC has firsthand knowledge of only a small percentage of all contractors and tradespeople in the Memphis area, so nothing should be assumed about someone not listed here.

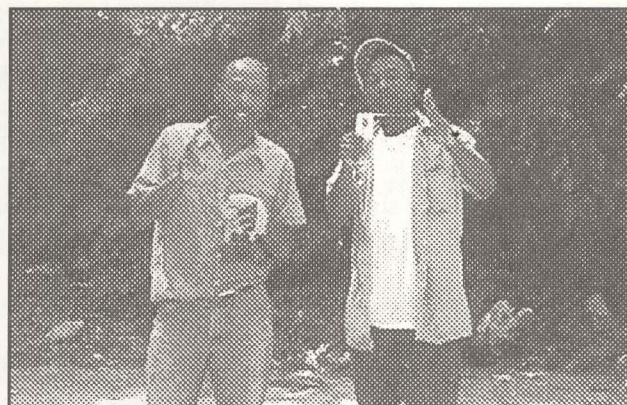
Information provided in this column is offered in good faith, as a public service only. VECA CDC does not warrant that its experience with any of these will be similar to experience you might have. VECA CDC has no business arrangement with any of these, nor does it receive a referral fee, kickback, or any other favor.

### Do you want to remodel? Do you need home repairs but don't know how to start?

VECA CDC has staff that can assist Vollintine-Evergreen residents with inspecting and determining necessary repairs. Staff can also prepare the scope-of-work and do preliminary estimates. The fee is modest. Call the VECA office for details.



**276-1782**



*Two of the six men who cleaned out 1505 Jackson*

# HOW VOLLINTINE-EVERGREEN RESIDENTS CAN HELP

Dozens of Vollintine-Evergreen residents currently serve on one of our Committees or on one of our two Boards, and about one hundred residents help prepare and deliver this newsletter. But there are always tasks — one-time and recurring, large and small — that VECA CDC staff members don't have the time or the expertise to tackle, so whatever your skills and resources, your help is always welcome.

- Can you help sort, label, and store photographs?
- Can you help prepare various display boards?
- Can you do light carpentry and painting at the office?
- Can you repaint the metal Watkins Village sign?
- Can you help us stripe the office parking lot?
- Can you help network computers (mostly middle-aged PCs)?
- Can you help create a "master database" using Access?

Remember that VECA CDC is a 501(c)(3) nonprofit corporation, which means that your donations may be tax-deductible. We would gladly arrange free pickup of any donated used goods:

- a good old-fashioned electric typewriter
- file cabinets
- shelving
- folding chairs

Visit or call the office if you might be able to help in any way, whether it is listed here or not. Thanks.



## ALERT TO LAWN PARKERS

We've tried to be nice and neighborly, but several warnings against parking on lawns have been ignored (especially on University Circle and Jackson Avenue). Parking on the grass will eventually turn your front lawn into a mudhole. **It's unneighborly, unsightly, and against the law.**



## SOME PHONE NUMBERS AND WEBSITES

576-6500

Mayor's Citizens Service Center

545-COPS (545-2677)

non-emergency police matters

[www.state.tn.us](http://www.state.tn.us)

everything about the state of Tennessee

[www.comptroller.state.tn.us](http://www.comptroller.state.tn.us)

state of Tennessee financial matters

[www.co.shelby.tn.us/index.htm](http://www.co.shelby.tn.us/index.htm)

everything about Shelby County

[www.shelbycountystate.com](http://www.shelbycountystate.com)

County tax lookups, etc.

[www.assessor.shelby.tn.us](http://www.assessor.shelby.tn.us)

properties' owners, sales, improvements, permits, etc.

[www.ci.memphis.tn.us](http://www.ci.memphis.tn.us)

everything about Memphis

[www.memphischamber.com](http://www.memphischamber.com)

Memphis Regional Chamber of Commerce

## CODE ENFORCEMENT UPDATE

by Andrew Wilkins

The Brown Howell Clean Sweep on May 13 was a huge success! With help from members of the Government Club of Cypress Middle School and teacher Miss Van, dozens of trash bags were filled with unsightly rubbish from the Brown Howell area in the northeast corner of Vollintine Evergreen. Also on hand to survey the needs were police officers, firefighters, and code enforcement officers.

Clean Sweep is a program sponsored by the Mayor's Citizen Service Center that coordinates police, fire, health and code enforcement city services to "sweep away" all the code violations of a specific area. Much thanks to the residents of Brown Howell, city services and the students of Cypress Middle School that helped make this project happen.

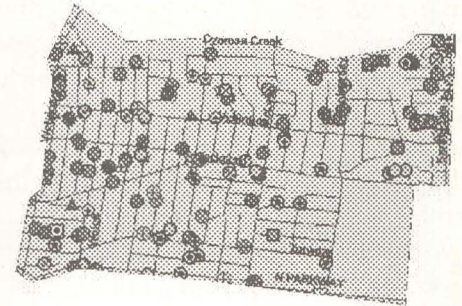
VECA needs area churches' participation to make its new Youth Aid program happen.

Early this spring, VECA received a grant to match church youth with needy elderly/handicapped neighbors for jobs around their homes and yards. VECA has acquired some equipment and supplies but has otherwise been unsuccessful in getting this project going. We hope that our neighborhood churches will assist us in the start up of this project. We also encourage those residents needing assistance to call us at 276-1782.

## NEIGHBORHOOD CRIME

April 1 - May 31, 2002

- Master\_incident-hd.shp
- ▲ Aggravated Assault
- Aggravated Assault D/V
- Animal Injury
- ⊙ Attempted Suicide
- Bomb Threat
- Burglary/Business
- Burglary/DV (Domestic Violence)
- ⊙ Burglary/Non-Residential
- Burglary/Residential
- Child Abuse Aggravated
- ⊙ Counterfeiting/Forgery
- DOA/Natural
- DOA/Unknown
- ⊙ Drug/Narcotics Violation/Felony
- Forcible Rape
- ⊙ Identity Theft
- Intimidation
- ▲ Kidnapping/Abduction
- MVT/Passenger Vehicle
- Murder
- Obscene/Harassing Phone Calls
- Other Theft / Non-Specific
- Robbery/Individual
- Runaway
- Shoplifting Misdemeanor
- ▲ Simple Assault
- Simple Assault D/V
- Stalking
- Suicide
- Theft & Recovery / Passenger Vehicle
- Theft from Building
- Theft from Motor Vehicle
- Theft of Vehicle Parts/Accessories
- Threatening Phone Call
- Vandalism / Felony
- Vandalism / Misdemeanor
- Weapon Law Violation/Felony
- Weapons Law Violation / Misdemeanor
- ▲ New Streets
- Memphis\_neighborhoods.shp



## NEXT PHASE OF CYPRESS CREEK ENVIRONMENTAL STUDY BEGINS

Velsicol Chemical Corporation began the next phase of the Cypress Creek environmental study in June by taking soil samples in the University Park/Cypress Middle School schoolyard during the week of June 10 to 14.

According to Gary Hermann, Velsicol's project manager for the Cypress Creek studies, representatives from the Tennessee Department of Environment & Conservation (TDEC) recommended the use of a special screening technology called immunoassay in the next phase of the study. "This technology will be a more efficient way of locating potential hot spots, and if it proves to be reliable, we will be able to sample many more locations," Hermann says. "It will first be tried in a portion of the study area, where soil samples will be tested using conventional laboratory methods and then compared with test results using the screening method. If the results are demonstrated to be reliable, the screening technology will be incorporated into the soil sampling plan for the remainder of the study area."

Hermann says Velsicol will use the data from University Park and the schoolyard to conduct a health risk evaluation of that area. Based on this information, the company will design the environmental studies for the remaining area along Cypress Creek, from Jackson Avenue to Evergreen Street.

The pilot testing of the screening methodology will push the schedule back a few months for the remaining soil samples originally discussed during the May 13 open house and forum held at Cypress Middle School, but overall will result in a better, more comprehensive investigation.

Representatives from Velsicol will be meeting with Vollintine-Evergreen Community Association (VECA) leaders, elected officials, and other community groups.

If you have any questions about the Cypress Creek Environmental Study, please contact Gary Hermann at Velsicol's Memphis Environmental Center at 345-1788x120 or at GHermann@Velsicol.com

# VOLLINTINE-EVERGREEN HISTORIC DISTRICT HOME AND GARDEN TOUR

by Linda Nichols

On Sunday, April 28, about 700 people discovered Vollintine-Evergreen! Everything went right to make this year's Home Tour the biggest ever. We had a fun linkage with SpringFest. We had wonderful publicity, especially from the Commercial Appeal's Wayne Risher in the Neighbors section and Christine Arpe Gang in the Home and Garden section. We had a beautiful, sunny day. And we had fabulous, interesting houses.

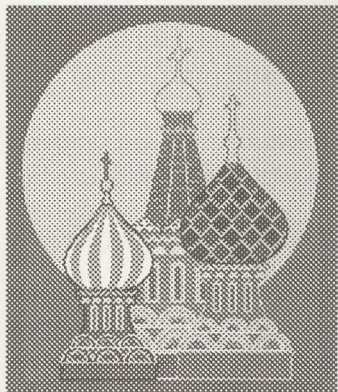
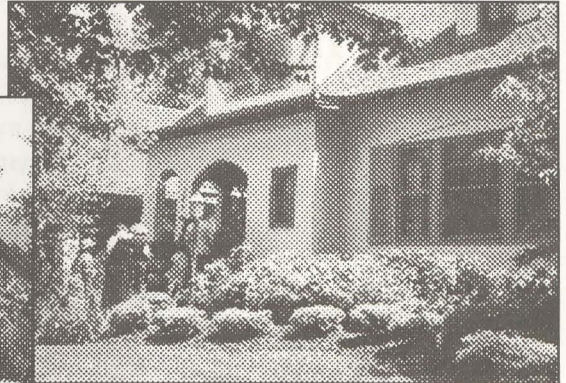
Although most of the visitors had never been to Vollintine-Evergreen, many had historical ties to our neighborhood. Former residents and children of former residents had a great time sharing their memories of living in Vollintine-Evergreen and even living in some of the houses on the tour. One of the most fun aspects of the tour was the enthusiasm of the visitors, the home owners and the docents. Visitors wanted to know "how does your garden grow" and home owners were happy to share tips and secrets.

The Home Tour is one of the best ways to showcase our neighborhood. People who normally drive through on their way to somewhere else can stop and learn more about us. The Home Tour only happens with the hard work of many volunteers, the Historic Committee and docents, the support of the neighborhood

in sprucing up the area, buying tickets and coming to see the houses, the generosity of our sponsors and advertisers, and the willingness of home owners to open their homes. Our thanks to all who participated.

Also, thanks to the Block Club committee for sharing a very successful day and working hard to make the Home Tour and Spring Festival a neighborhood wide event.

We will begin planning the next Home Tour in July. If you would like to join the Historic Committee and add your strength to ours, please meet with us on July 8. Call the VECA office at 276-1782 for the location.



## SEE WONDERS CZARS EXHIBIT AND HELP VOLLINTINE-EVERGREEN

The Wonders exhibit "Czars: 400 Years of Imperial Grandeur" will be at the Pyramid through September 15. Buy your vouchers through VECA at the regular adult price of \$14, and part of your purchase price will benefit our neighborhood. Vouchers can be redeemed at the Pyramid Box Office any day and time the exhibition is open. Just stop by the VECA office (1680 Jackson Avenue) during regular business hours. Remember, you will be paying the usual adult ticket price and still supporting Vollintine-Evergreen.

## VECA'S SPRING FESTIVAL

by Gloria Fulton

The Block Club Committee and the Historic Committee united their efforts on April 28 to celebrate families, friends, and neighbors in the Vollintine-Evergreen community. Many set this day aside to visit well-decorated homes and gardens as well as to attend the Spring Festival. Snowden School was the perfect location for artists, dancers, vendors, good food, games, fun, and entertainment. Particular attention was given to the Native American Dancers with their colorful head-dresses and attire. The children were focused and attentive as they danced and chanted in the warm April sun.

The Block Club Committee thanks the entertainers for making this a festive occasion: Snowden School's Choir and Band, Evergreen Presbyterian Church's Choir, the Native American Dancers, Young Women Striving for Excellence, Doug Weaver, Melanie LaRue, Will Masters, John Lowe, Andrew Wilkins, and Gene Lee. Committee volunteers gave their time and talents to make it happen: Annette Anderson, Janis Cannon, Barbara Coleman, Debbie Cochran, Julia Gilliland, Lillian Griffin, Bettye Johnson, Belinda Kerusch, Janet McGregor, Jessie Rodgers, Lois Scott, and Alma Warren. Apologies for anyone not remembered here!



## TEAM SPIRIT

by Gloria Fulton and Jackie Blair

Members of the North Willett Children's Block Club love to work.

Mrs. Sadie Tuggle started working with children in the Hyde Park neighborhood where she grew up. In an abandoned house, she created a classroom, a music room, an office, and a cafeteria. Mrs. Tuggle taught math, spelling, and writing; Mr. Ricky Carr taught music. Parents were very cooperative and helped in every way they could. St. Ann Baptist Church opened its doors for dinners and special programs, including graduation.

After Mrs. Tuggle moved to the Vollintine-Evergreen area in 1996, neighborhood children would come and talk to her everyday. As time progressed she started working with them in her backyard, and she came up with the name North Willett Children's Block Club. Congressman Harold Ford, Jr. came and spoke on "How to Stop the Violence".

The North Willett Children's Block Club keeps our community clean by picking up trash, helps the elderly, and collects canned goods for the foodbank. Mrs. Tuggle's goal is to teach the children how to love each other and God.

North Willett Children's Block Club members include Jerney Jones (8), Shaquita Jones (10), Kimberly Shaw (10), April Standback (9), and Jared Williams (10), who attend Vollintine Elementary School; Mario Bailey (11) and Ciara Williams (12), who attend Snowden School; Danielle Jordan (13), Kariska Prewitt (13), and Laquinta Smith (12), who attend Cypress Middle School; Jasmine McKinley (12) who attends Riverview Middle School; Angela McComb who attends Mississippi Boulevard Christian Academy; Rudy McKinley (15) and Myricco Claxton (15), who attend Northside High School; Shun Sain (17) who attends Westside High School; Tristian Boyland (18) who attends Treadwell High School.



For 3 and 4  
years old

**REGISTER  
NOW!**

**Trinity Preschool**  
1738 Galloway Ave. 274-6895

A Ministry of Trinity United Methodist Church



**The Church  
Of The  
Good Shepherd**

*A Traditional Episcopal Church  
1928 Prayer Book*

MASS - 7:30 A.M. & 10:30 A.M. SUNDAY  
HOLY EUCHARIST - 10:30 A.M. WEDNESDAYS  
(NURSERY AT 10:30 SUNDAY)

1971 JACKSON AVENUE AT UNIVERSITY AVENUE  
**901-725-9768**



**St. John the Evangelist  
Orthodox Church**

Sunday  
Orthros at 9 am • Liturgy at 10 am

Weekdays  
Wednesday Vespers at 7 pm  
Saturday Great Vespers at 7 pm

1663 Tutwiler Avenue at Dickinson  
(901) 274-4119

**EVERGREEN PRESBYTERIAN CHURCH**  
613 UNIVERSITY AVENUE (ACROSS FROM RHODES COLLEGE)  
(901) 278-4430

AFTERSCHOOL MINISTRY:  
Safe and fun for K-8 students,  
Monday-Friday 2:15-6:00pm

SUMMER CAMP MINISTRY  
The cool MidTown day camp for K-Junior High  
Monday-Friday 8:00am-3:00pm

EXTENDED CARE: 3:00-6:00pm

**McLean Baptist Preschool**

Full service child care at affordable prices  
Licensed for children 15 months and up  
Before and after school transportation with  
child care for Snowden and Vollentine Schools

Full day summer and holiday program  
for school age children

**Now enrolling for all programs**  
815 N. McLean • 274-9440



**Little Flower Primary School**

*Now Enrolling*  
**Pre-kindergarten, Kindergarten,  
& 1st Grade**

1666 Jackson Avenue  
Memphis, TN 38107  
725-9900

Scholarships  
available!

**OPEN DOOR BIBLE  
CHURCH**

1792 North Parkway  
Memphis, TN 38112 (901) 278-4311

**Gary D. Starbuck, Pastor**  
*Nursery Available*

Sunday Services: 10:45 am and 6:00 pm

*"A common people  
with an uncommon love"*

**St. Therese  
Little Flower Catholic Community**  
Jackson at Belvedere

Sunday Eucharists  
8:00 a.m., 10:30 a.m.

Saturday Vigil Mass - 4:30 p.m.  
Tues. and Thurs. Mass - 5:30 p.m.  
Wed. and Fri. Mass - 8:15 a.m.

Saturday Confession - 3:45 - 4:15 p.m.

276-1412



"All Are Welcome"



## ASK THE BANKER: Home Mortgage

Shopping around for a home mortgage can be a very stressful and scary undertaking. This column should help you understand some of the terms you may encounter when purchasing a home. Remember to shop around, compare costs and terms, and negotiate your best deal.

**Question:** *What is a mortgage?*

**Answer:** A mortgage is a legal document that allows the lender to take possession of the property if the borrower fails to pay off the loan.

**Question:** *What is the Annual Percentage Rate (APR)?*

**Answer:** The APR is the cost of credit expressed as a yearly rate. It includes the interest rate, points, broker fees, and certain other credit charges that the borrower is required to pay.

**Question:** *What are points?*

**Answer:** Points are fees paid to the lender. One point equals 1 percent of the loan amount. Points are usually paid in cash at closing. However, the money needed to pay points can be borrowed, but this will increase the loan amount.

**Question:** *What are loan origination fees?*

**Answer:** Loan origination fees are charged by the lender for processing the loan and are usually a percentage of the loan amount.

**Question:** *What is a fixed rate loan?*

**Answer:** A fixed rate loan is a loan in which the interest rate stays the same for the life of the loan. So your monthly payments (principal and interest) never change.

**Question:** *What is an adjustable rate loan?*

**Answer:** An adjustable rate loan is a loan in which the interest rate fluctuates over the life of the loan depending on market conditions. When interest rates rise, so do your payments, but when they fall, your payments fall accordingly.

**Question:** *What is Private Mortgage Insurance (PMI)?*

**Answer:** PMI protects the lender against a loss if a borrower defaults on the loan. It is usually required when the downpayment for the home is less than 20 percent of its price.

**Question:** *Can VECA run some free financial management classes, for both children and adults?*

**Answer:** We hope to be able to soon! If you are interested, call the VECA office at 276-1782.

**Question:** *What if I have other financial questions or issues for future columns?*

**Answer:** Call the VECA office at 276-1782.

Most of this month's answers were contributed by BancorpSouth.

Information provided in this column is offered in good faith, but individuals should carefully consider whether the advice suits their own particular circumstances and act accordingly.



Complete  
Banking Services

**Regions**  
Bank

1-800-REGIONS

MEMBER FDIC

# CONGRATULATIONS

Two educators with connections to the Vollintine-Evergreen neighborhood were among seven in the city recently named "Exemplary Teachers for 2001-2002" under the Memphis Urban Systemic Program.

**Daphne Jones** teaches math at our own Cypress Middle School. She has been involved in development of assessment tools for Algebra I, serves on the middle school curriculum team, and received training from Texas Instruments as part of the technology team.

**Fredha Feaster** teaches at Alcy Elementary School. She does teacher training on second grade science curriculum implementation. Somehow Fredha still has time to serve on the VECA Board and its Historic Committee, and she is in charge of the bimonthly distribution of about 4500 copies of this newsletter.

## ANOTHER BRIDGE ON THE V&E GREENLINE

The V&E Greenline Committee is almost ready to install a second bridge. This bridge will be over West Creek behind Woodmont Towers. Those who witnessed the November 2000 installation of the Lick Creek bridge won't forget that event, and this next installation at West Creek will be just as dramatic, when a crane lifts the completed bridge onto concrete piers.

The date and time of the installation are not set as this newsletter goes to press, but should be set by the time you read this, so call the VECA office (276-1782) for more information.



# HomeStyle

by Linda Nichols

Welcome back to Home Style - we have been on a break while preparing for this year's Vollintine-Evergreen Historic District Home and Garden Tour. I hope you came to see our Tudor homes, all very different but all beautiful. We had almost 700 visitors who came to discover our wonderful neighborhood.

In past columns, we have looked at doors, windows and roofs. Now let's explore one of the most welcoming parts of your home - the porch. First, some definitions and terminology. Technically the porch is the place that contains the main entry into the house. It may or may not be the most elaborate external part of your house. You may have two front porches on your home - just remember only the one containing the main entry is the real front porch. Porches are always permanent. You may have an awning or a corrugated plastic roof. However, these don't contribute to your home's place on the National Register of Historic Places.

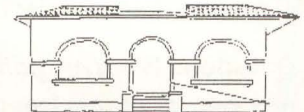
Porches can have straight or arched openings.

A small front porch with no roof is called a stoop. A small stoop may have an entry hood over it - a covering with no supports. An entry hood with supports over a small stoop makes a portico. The size of the stoop determines whether it is a portico or a porch. If there is not enough room for a chair, it is a portico. A unique covered structure extending the porch and covering the driveway on the side of the house is a porte-cochere (literally: coach door). Porte-cocheres typically serve as places for cars to be parked and unloaded for people to be sheltered getting out of cars.

The second important term to know is "piers." (No, piers aren't where you tie up your boat.) Piers is the technical term for the supports that hold up your porch. Each pier has two components - its shape and its material. Piers can go all the way down or sit on a base, which is often stone or brick.

Boxed or straight piers can be stone, brick, wood or stucco. They are simple, with very clean lines. Turned piers are usually wood - these are often called columns. Columns can be simple or fancy. For our Vollintine-Evergreen application to the National Register of Historic Places, we called all our columns Doric. Doric columns are simple and the kind most often found on Colonial homes and the Colonial homes in our neighborhood. For you architectural buffs, the other kinds of columns are Ionic, with spiral/scroll shaped capitals (the top part of the column) and Corinthian, with bell shaped capitals ornamented with acanthus leaves.

Battered piers taper up from a wider base to a narrower top. They can be wood, brick, stone, or stucco. Bases can also be battered. Any type of pier can sit on any type of base. Craftsman style homes often have battered brick or stone piers sitting on battered stone or brick bases.

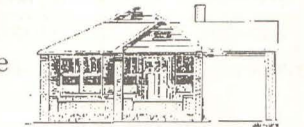


Porch with arched opening

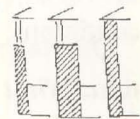


Entry Hood

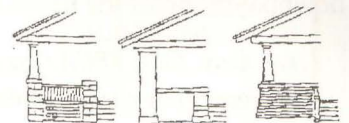
Portico



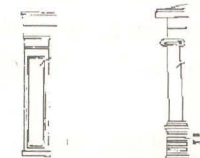
Porte-cochere



Boxed piers

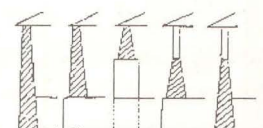


Turned piers



Doric Column

Corinthian Column



Battered piers

# FOURTH ANNUAL CLANJAMFRY: A SCOTTISH FESTIVAL PLANNED

Evergreen Presbyterian Church will hold the fourth annual celebration of Clanjamfry: A Scottish Festival this fall on September 20-22. This family-oriented event was first held in 1999 with the stated purposes of exploring the Scottish heritage of the Presbyterian church; raising funds for Evergreen's recreation ministry; and gathering the community in the ministry, mission and fellowship of Evergreen Church.

It begins Friday evening at 8 p.m. with a ceilidh (kay-lee), a traditional Scottish entertainment featuring music, dance demonstrations, recitations and more, held in the beautiful McCallum Ballroom of the Rhodes College Bryan Student Life Center. Rhodes College is located directly across the street from Evergreen Church. Admission to the ceilidh is \$3.

On Saturday, the Scottish Faire is held outside on the church lawn from 10 a.m. until 7 p.m. that evening. The opening ceremonies bring together the Wolf River Pipes and Drums bagpipe band and the Scottish American Military Society leading out the Parade of Tartans, with clans marching to show off their plaid symbols. Throughout the day, the main stage features regional bands and soloists performing Celtic music ranging from quietly introspective works to edgy, upbeat tunes. Jim Geurin will once again delight all ages as he puts his amazing sheepdogs through their paces guiding a herd of sheep around the grounds. Festival-goers will get a chance to try their hand at tossing a caber at our Scottish athletic demonstration area, and others can sink golf putts, spin the Scottish history wheel, or shoot off the catapult for prizes in our game area. Highland country and Irish step dancing will be shown on the dance stage, and the Scottish Heritage Tent, sponsored by Rhodes College, will offer ongoing talks on topics such as the Gaelic language, the legend and reality of Mary, Queen of Scots, and genealogy. Musick in the Kirk provides a quiet respite in the Evergreen sanctuary, with lower-key musical performances throughout the day. The Dragon's Lair, a children's area sponsored and presented by the Evergreen Playschool, offers art activities, face and fingernail painting, a castle bounce, and more. Vendors of food, both southern and Scottish, and Celtic-themed goods such as jewelry, books, tartan ties and scarfs, CDs and more are scattered about the grounds. Admission to the Faire is \$5 for adults, \$4 for seniors 55 and over, and \$2 for students with IDs and kids 5-12. Children under 5 are admitted free. Group discounts are available.



Saturday evening at 7 p.m., Clanjamfry is proud to present Jock Tamson's Bairns in concert, direct from Scotland. Presented in cooperation with the Mid-South Celtic Arts Alliance, the Bairns are widely considered one of Scotland's very best traditional music groups, with CDs appearing on critics' "all-time best" lists and several that have sold out in record time. Concert tickets are \$15.

Sunday morning we offer the glorious Kirkin' o' the Tartans, a moving and magnificent church service featuring Scottish hymns accompanied by the Wolf River Pipes and Drums and other elements of traditional Scottish church worship. The grand processional includes the clans marching with their tartans, which are presented and blessed as part of the service.

Following the Kirkin', those attending are invited to join us for a traditional southern dinner on the grounds, a fitting and friendly end to the weekend's festivities.

Evergreen Presbyterian Church is located at 613 University Street in Memphis, Tennessee. For general information, call the Clanjamfry information line at 901/458-2043. For information on the Bairns concert, call 901/276-1527.

## Sponsorship opportunities for Clanjamfry

Clanjamfry attracts people from all across the city to Midtown and shows them what a great place it is! Support this neighborhood event by becoming a sponsor. Each level of giving offers special benefits, including tickets to events, a listing in the printed program, and an invitation to a special festive reception held in the beautiful Crain Reception Room at Rhodes College immediately prior to the ceilidh. The categories are:

- Royal Thistle — \$1000 +
- Gold — \$500 -999
- Silver — \$250-499
- Bronze — \$100 -249
- Lads and Lasses — \$25-99

Make your checks payable to Evergreen Presbyterian Church and mark them for "Clanjamfry". Also mark on your check that you're a VECA neighbor so we can keep track of your support. Mail them to the church at 613 University, 38107.

**VECA MEMBERS**

Name Kesler, Betsy  
 Telephone Day: Burrow Library Archives  
Rhodes College  
 Telephone Evening: \_\_\_\_\_  
 Address \_\_\_\_\_ Zip \_\_\_\_\_

MAIL TO: MEMBERSHIP COMMITTEE, 1680 JACKSON AVE., MEMPHIS, TN 38107

**I'M INTERESTED IN: PLEASE CHOOSE ONE:**

- Block Club
- Historic Home Tours
- Housing
- Code Enforcement
- Commercial Revitalization
- Greenways
- V&E Greenline
- Youth
- Newsletter Delivery
- Newsletter Writing
- Volunteer (general)

**MEMBERSHIP DUES ARE \$10, \$20 OR \$35 PER YEAR**  
 AND ARE NOT TAX DEDUCTIBLE; ADDITIONAL DONATIONS TO VECA CDC MAY BE TAX DEDUCTIBLE

- \$10 dues, Individual
- \$20 dues (household), Gold Star members receive their choice of bumper sticker.
- \$35 dues, Gold Star Heritage members receive their choice of bumper sticker and the Historic Designation Plaque.
- Bumper Sticker A
- Bumper Sticker B
- Historic Designation Plaque



NEIGHBORHOOD REVITALIZATION  
 COMMUNITY REINVESTMENT  
 TAX EQUITY & LIVING WAGES  
 ENVIRONMENTAL JUSTICE

An Independent Voice for the PEOPLE of District 2

**VOTE Scott Banbury FOR COUNTY COMMISSION**

Let me take VECA's spirit and what we've learned and apply it to County policy... and bring more of your tax money home!

Call 726-1473 or visit [www.scottbanbury.com](http://www.scottbanbury.com)  
 1051 Stonewall Street - Memphis, TN 38107

VOTE FOR  
**CLAIBORNE FERGUSON**

A Voice for Memphis on the  
 County Commission

**County Commission - District 2 Position 3**

*Celebrating 25 years in the industry!*

**SOWELL & COMPANY**  
 REALTORS

Call us today so we can show you the silver lining in buying or selling your home.

54 N. Cooper Memphis, TN 38104 (901) 278-4380 [sowellco@bellsouth.com](mailto:sowellco@bellsouth.com)

If You're Looking For That Favorite Little Neighborhood Bar—Stop By And See Us At

**Alex's Tavern**

1445 Jackson Ave. • 278-9086

Proud To Be A Part Of The VECA Neighborhood For Over 40 Years—Since 1953!

- Coldest Beer In Memphis
- Great Burgers
- Four Big-Screen TV's & Satellite Sports

Voted "Best Jukebox In Memphis" And "Best Bar In Memphis"

**VECA**

**VOLLINTINE-EVERGREEN COMMUNITY ASSOCIATION**

VECA is a neighborhood organization made up of volunteers and paying members. The Vollintine-Evergreen News is the way in which VECA communicates with its residents. The Vollintine-Evergreen News contains information about VECA, neighborhood residents, and business and government policies. VECA is bounded by Watkins on the West, Cypress Creek on the North, Springdale on the East and North Parkway on the South. Contact VECA by writing to 1680 Jackson Avenue, Memphis, TN 38107 or call (901) 276-1782.