

Elizabeth Gates
Barret Library
Barret Library

VOLLINTINE EVERGREEN

N E W S

A Neighborhood Publication Sponsored by VECA, the Vollintine-Evergreen Community Association

VOLUME XXXV

JANUARY 2009

Annual Meeting

The annual meeting is an opportunity to meet your neighbors, learn what's new, get involved in the association, elect your VECA board, and pay your annual dues.

Together, we'll celebrate the accomplishments of the committees as well as acknowledge the challenges we face. All of our committees welcome your involvement and the meeting is a good time to learn more about how you can participate.

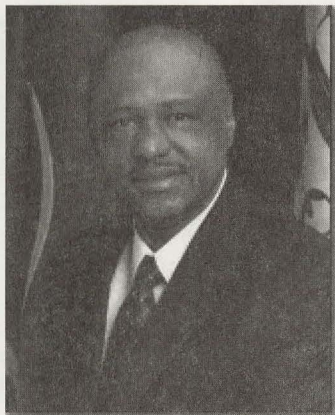
VECA will honor VECA's unsung heroes. The neighbors who pick up the garbage on their daily walks; the neighbor who keeps an eye on your home when you're at work or away; the neighbor who stays in touch to keep you informed of events taking place; the neighbor who goes the extra mile to keep his or her home and yard looking cheerful and attractive; the churches, schools, and the businesses that support our neighborhood. Can you picture them? Would you send us your stories of neighbors doing great things for VECA? Send your pictures and stories to: 1680 Jackson Memphis TN 38107 or news@veca-neighborhood.org

Dues are \$10.50 per individual, \$10.00 per household, and \$30.00 for Gold Start. Please also donate an additional amount for the VECA Welcome Center—see the article on page 6.

Council Member Joe Brown

Council member Joe Brown represents the VECA area in district 8-1 (see map on page 8). Council member Brown is a former chair of the Memphis City Council. He currently serves on the Budget CIP committee, Planning & Zoning, Public Works, Transportation, & General Services, and the Housing & Community Development Committees.

Story continued on page 2.



Volunteer Accomplishments

- Developed a dynamic email information system with over 400 participants receiving information at regular intervals.
- Gathered on the V&E Greenline for the Summer Jubilee ice cream social and picnic.
- Celebrated urban forestry at our Fourth Forest Faire fall festival and tree sale.
- Planted new elm trees on the University St medians and other trees on Tutwiler Ave, Avalon St, Maury St, and Brown Ave.
- Stopped a rezoning effort that attempted to build a 117 unit three story apartment complex next to Vollintine Hills.
- Maintained the V&E Greenline for the increasing number of people using it for exercise, health, and neighborng.
- Developed a strategy to address Lick Creek flooding and is continuing to encourage the City to address the problem.
- Worked with the State on environmental issues surrounding Cypress Creek and as a partner on a new grant proposal.
- Gathered for fellowship on National Night Out at the VECA office.
- Worked with City of Memphis code enforcement to save sound and beautiful VECA houses from demolition.
- Provided a newsletter with solid neighborhood articles.
- Worked with the North and West police precincts and sponsored a monthly speakers series on safety issues.
- Rented two VECA houses to wonderful tenants and rehabilitated two apartments in a VECA owned building.

Annual VECA Meeting

Monday January 26 at 7:00
Evergreen Presbyterian Church
613 University

Enter on the South Side from the Parking Lot

Potluck Dinner for Attendees 6:00-7:00

VECA officers and board are selected, awards are made for service, and VECA accomplishments are presented at this meeting.

VECA Brochure

Are you new to the neighborhood? The efforts of block club members, along with Rhodes College students and faculty, have resulted in the creation of a 36-page booklet about the Vollintine-Evergreen neighborhood.

Want to know more about VECA organizations?

Which churches and schools serve the neighborhood? What are some important code enforcement guidelines for the neighborhood? All of this and more is covered in the brochure.

The brochure is used to welcome newcomers, but it also contains helpful information of interest to all VECA residents. Copies are available at the VECA office, 1680 Jackson Avenue.



This is your invitation to
McLean Baptist Church
 815 North McLean at Jackson Ave.

**“The Church
 On The Corner
 with a Heart for
 the Community”**

Sunday Services 10:50a.m.

Article on Councilman Joe Brown continue from page 1

Councilman Brown supported VECA by voting against the rezoning request rezoning for a 117 unit three story apartment complex next to Vollintine Hills. He “went the extra mile” and met with the neighbors at the VECA office and visited the proposed rezoning site. He has long been a supporter of VECA efforts to preserve the community.

He lives on Terry Circle in Vollintine Evergreen and his business is located adjacent to Vollintine Evergreen. He can be contacted at 1384 Jackson Memphis TN 38107 (901) 274-4724.

VECA CDC and Affordable Housing

The VECA Community Development Corporation (VECA CDC) is the nonprofit organization that permits us to apply for grants that enhance the quality of life in our VECA community. For many years, VECA CDC's focus has been on acquiring lots and building affordable houses—some outside the neighborhood. The housing and lending markets have changed and loan money has dried up. To survive, we will have to rent out VECA owned properties and pay down the mortgages. This work is being coordinated by volunteers until and unless there are more appropriate opportunities for housing development. Any new work would have to be rehabilitation of existing house in the core VECA neighborhoods with sufficient resources from government, the private sector, or foundations. Come to the annual meeting to find out more about these changes. In the meantime, our nonprofit arm will apply for grants in areas to support our VECA Committees and if available, appropriate housing programs.

Join a VECA Committee

Open for all to attend, the Vollintine-Evergreen community has many committees on which residents can serve. The committees listed have a designated meeting time. Other committees, such as the Block Clubs, hold meetings periodically.

Call the VECA office at 276-1782 for more information about these committees.

Committees usually meet at the VECA office located at 1680 Jackson Ave.

www.veca-neighborhood.org

VECA & VECA CDC Boards	First Monday of the month	6:30 pm
VECA CDC Committee	Last Saturday of the month	9:00 am
Neighborhood Preservation	Fourth Thursday of the month	6:00 pm
Neighbors for Trees	Third Monday of the month	5:30 pm
V&E Greenline	Monday January 12 at 1680 Jackson and Monday March 9 at 620 N. Avalon (Stationhouse)	6:30 pm
Safety and Security	First Tuesday of the month at McLean Baptist Church, Crump Ave and McLean Blvd	7:00 pm

Rhodes Students Helping VECA

Revitalization efforts have been made on an apartment located at 795 Maury Street owned by VECA CDC.

Two Rhodes students, Lacy Ward and Maura Mohler (pictured below), involved the Rhodes College fraternities in their efforts to provide both quality and affordable housing in the Vollintine-Evergreen neighborhood.

For approximately the past two months, the students have been surveying housing conditions, foreclosures, safety issues, and mortgages along Maury Street.

However, the main focus of their project was the three bedroom apartment in desperate need of repair. With guidance from resident contractor Jim Doyle, as well as VECA board member Mary Wilder, Maura and Lacy guided fraternities men through the scrubbing, cleaning, demolishing and repair of the apartment.

Renovating an apartment, something that sounds quite simple, has proved much more difficult. The scratched and burned floors, broken walls and cracked windows have yet to be repaired. Other volunteers will be needed for that work.

Their efforts and time have been concentrated on the intense cleaning and demolition of items that were no long appropriate for the apartment—a task much more difficult than imagined.

The students' work was valued at about \$2,000 and once completed will help provide better quality housing for the neighborhood. Other problems on Maury St are on the decline—efforts like this will help this positive trend continue.

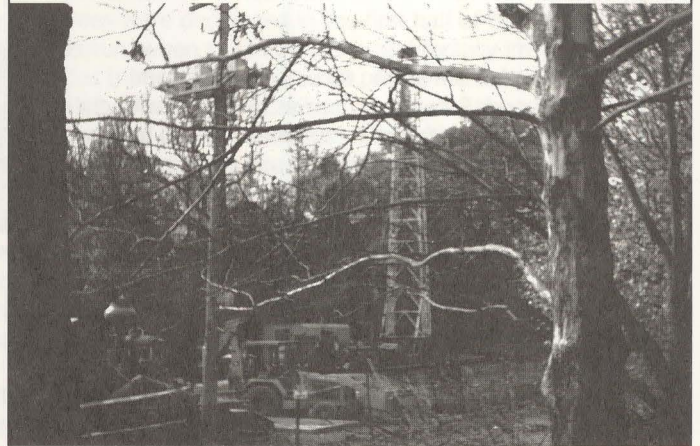
Maura and Lacy are using this project as an educational experience—the have learned about multifamily housing, how neighborhoods function, issues related to nonprofit organizations, and the complexity of rehabilitating historic buildings.



MLGW Digs up New Well

MLGW's city water well was dug in the 1950s and is no longer useable, according to workers at Auburndale St and the MLGW greenspace.

The large hole adjacent to the V&E Greenline is a new well that will provide water for city residents. The work is being done by Layne Industries, located on University St, north of Vollintine Evergreen. See the picture of this impressive project taken from the V&E Greenline.






 Designs by Gloria

 Gloria Fulton Singleton

 E-Mail: gfsdesign@aol.com

P.901.272.3845

 C.901.288.3819



Rhodes College

 —1848—

Rhodes College has many public lectures, art exhibits, sports events, and musical events.

Check the website for current information.

<http://www.rhodes.edu>

Vollentine Elementary School

More than seventy years ago, in 1936, a small twelve-room school opened its doors to five hundred and forty five students. This school, the Vollentine school, with grade one through six, quickly became one of the largest grade schools in the city. As enrollment increased, the city created additional classrooms and added 320 students to the enrollment.

Vollentine School is a noted optional school, which means it provides an enriched curriculum. Vollentine School's main focus is to have its students become academically proficient. It also has an art and music program, as well as an outdoor amphitheatre. The atmosphere in the building is one that is felt instantly walking through the halls. It is historical, a school that has been shared by generations of neighborhood families. Even the current secretary, Miss Eisel has been at the school for over 30 years with many more to come. From grandparents to grandchildren, the Vollentine School lies in the hearts of many families.

The school welcomes volunteers to tutor students after school.

Vollentine places a strong focus on parents and neighborhood. Parents or families members with children in school are urged to be proactive and take part in a child's education! Vollentine school believes that education is the key to success. Help a Vollentine child achieve that success and volunteer today!



Partnership: Cypress Middle School Working with Springdale Baptist Church

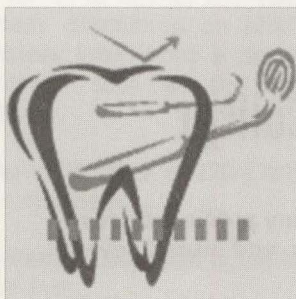


Teachers and Children from Cypress are pictured after the cleanup and planting trees donated by Henry Turley and VECA's Neighbors for Trees.

Scouts Cleanup on Greenline



Boy Scouts Troop 13 located at Trinity United Methodist Church recently picked up downed limbs on the V&E Greenline section from McLean to University. Thanks to John Langley and Len Cobb for coordinating.



**In the Heart of Memphis
James Elliott, D.D.S.
Dentistry with a Gentle
touch**

**10 S. Belvedere
276-7042**

Belvedere Blvd at Madison Ave

Jared Powelson, OD

Mike Gerstner, OD

MIDTOWN EYE CARE

COMPREHENSIVE EYE HEALTH EXAMS
GENERAL AND SPECIALTY CONTACT LENS FITTINGS
MEDICAL MANAGEMENT OF EYE DISEASE
LARGE SELECTION OF DESIGNER FRAMES • ACCEPT MOST INSURANCES

16 N. McLean at Madison (across from Finos) • 725 EYES

Neighbors For Trees

The fourth annual Forest Fair was co-sponsored by VECA's Neighbors for Trees and held at the Botanic Garden. It was an opportunity for "green" organizations to display their materials, for nurseries to sell native trees and plants, and for residents to listen to presentations on topics such as which trees to plant.

The Henry Turley Company made a special gift of trees which were given to several neighborhoods, including VECA and Hollywood Springdale. Trees were planted on Brown Ave by Cypress Middle School (pictured on page 4). Springdale Baptist Church planted the trees adjacent to Springdale St. The V&E Greenline Committee planted trees on Maury St.



Neighbors for Trees also coordinated the planting of 29 Valley Forge Elms in the University Street medians during the Thanksgiving holiday week. These are Dutch Elm disease (DED) resistant trees that were introduced to nurseries in 1996. The University Avenue planting represents the first major planting in Shelby county of a tree that was once the iconic American Tree. American Elms were very popular in American cityscapes because of their graceful vase shape and their tolerance of tough urban conditions. You may have seen pictures of tree lined streets where the tree limbs formed a cathedral arch. More than likely these were elm trees.

Sadly, the trees were decimated in the first half of the twentieth century when cabinet makers accidentally imported beetles that spread the disease. Many cities lost their tree-lined streets as the disease spread. By the early forties, no one was planting American Elms although some trees from the period survive today—for example Idlewild St north of Tutwiler. American Elms can be planted today because of the work that has been done to develop species that are not as susceptible to DED. When they mature (in twenty or so years) the trees on University will provide a graceful complement to the traditional architecture of Vollintine-Evergreen houses.

See the picture to the left of tree planting by the City of Memphis. Funding for the elm trees was made from a grant from the State of Tennessee

Contributions

VECA CDC was the recent recipient of two large contributions from neighborhood residents. One contribution of \$20,000 was made to VECA CDC to pay for some of the costs of its affordable housing program. Another contribution of \$7,500 was directed to the V&E Greenline to be used as an emergency fund for problems such as tree removal and damage from storms.

Gifts and contributions made to VECA CDC can be tax deductible. Please also remember to include VECA in your will so the neighborhood has the resources to carry on its important work. VECA CDC can also accept donations of real estate.

Advertising

Want to reach 4,000 VECA residents and other neighborhood supporters? Why not advertise in the *Vollintine-Evergreen News*? Local businesses like yours can receive community support by appearing in our pages. Just \$150 buys 6 prominent ads in our 2009 newsletters. Don't wait! Call our advertising manager at 276-1782. The ad can be paid in two installments of \$75 each. It will help you get customers and help the neighborhood at the same time.

If You're Looking For That Favorite Little Neighborhood Bar—Stop By And See Us At

Alex's Tavern

1445 Jackson Ave. • 278-9086

Proud To Be A Part Of The VECA Neighborhood For Over 40 Years—Since 1953!

- Coldest Beer In Memphis
- Great Burgers
- Four Big-Screen TV's & Satellite Sports

Voted "Best Jukebox In Memphis" And "Best Bar In Memphis"

John Ponnath,
Financial Advisor

1264 Peabody Ave.
Memphis, TN 38104
Bus. (901) 276-0523
John.ponnath@edwardjones.com

Edward Jones
MAKING SENSE OF INVESTING

Evergreen Presbyterian Church: Thriving in the Community



Evergreen Presbyterian Church is located at 613 University Street and it will be hosting the 2009 VECA Annual Meeting—enter through the south (left) of the church

Around the turn of the century, the Vollintine-Evergreen area was the place to be. Quite the bustling neighborhood, the need for more churches in the region grew to be a major necessity. On February 6, 1910 thirty six charter members, along with the help of Second Presbyterian Church, formed what is now the Evergreen Presbyterian Church. Initially services were held in the home of Mr. and Mrs. A.B. Carruthers. The Church started to build a home for itself in December 1950. With it's first service taking place in October of 1951 the Church has since continued to be an uplifting addition to the neighborhood.

Today, the Evergreen Church is very much involved in the activities in the neighborhood, from after school care to athletic teams. The church not only serves as a resource of spiritual revitalization, but addresses the physical and mental as well. It has a preschool and kindergarten program, but also provides after-school tutoring for elementary age children.

Evergreen Presbyterian sees that community building must start within the family. Every Wednesday night, at 5:30, the church provides a family dinner for anyone that would like to come and share with the neighborhood. Along with dinner, there is usually a speaker to talk to the families.

The church not only sees itself as a recreation center for the neighborhood, but also a comfortable environment, open to everyone who would like to come and experience their services.

The church especially wants to reach out to the young families just arriving in the neighborhood to come join their mission of building a stronger community. For more information about the church and the many ways that you can get involved, visit: <http://www.evergreenmemphis.org/home.html>



VECA Neighbor since 1987

Garnette Stephens
ABR, CRS, GRI, SRES

Buying, selling, or relocating?
For the professional, personal service you deserve,
let me be your Realtor!

EXPERIENCE KNOWLEDGE INTEGRITY

Office: 901-261-7900	1255 Lynnfield Road, #100
Fax: 901-261-7999	Memphis, TN 38119
Mobile: 901-848-1937	GarnetteStephens@kw.com

Thank You Wachovia Foundation

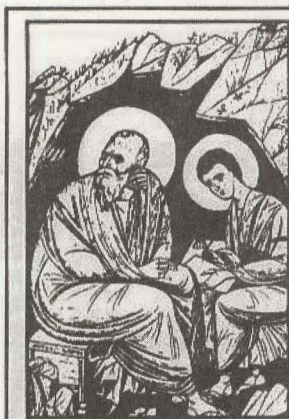
VECA CDC received an affordable housing grant from the Wachovia Foundation. VECA expresses its appreciation to the foundation for the generous award. According to its website, "The mission of The Wachovia Foundation is to build strong and vibrant communities." It supports helping sustain affordable housing, and building inclusive and diverse communities.

VECA Welcome Center

The VECA Welcome Center at 1680 Jackson Ave is an exciting transformation of what was formerly an office. It will be a place for increasing number of neighborhood activities. Many meetings will take place at the Welcome Center. Residents who want to work on issues will meet at the office. It will be the "crossroads" and "hub" of VECA.

In order for this to happen, there will be a need for funding. The monthly mortgage note and costs such as utilities, insurance, and phone services must be paid. And that can only happen if contributions are forthcoming from VECA residents.

Please add money to the yearly membership and designate it for the Welcome Center. Special fundraising events are being planned to support the Center.



St. John the Evangelist Orthodox Church

Sunday
Orthros at 9am • Liturgy at 10am

Weekdays
Wednesday Vespers at 6:50pm
Saturday Great Vespers at 5:50pm

1663 Tutwiler Avenue at Dickinson
(901) 274-4119

Neighborhood Watch Success

Nestled in the northeast quadrant of VECA is the Rainbow Circle neighborhood. Consisting of 50 homes on four streets (South Rainbow, East Rainbow, North Rainbow and Monticello), the area is a diverse neighborhood with attractive homes, large trees, and well maintained properties. With most homes built in the early 1940s, it is among the few circle-type neighborhoods in VECA.

Despite its serenity, it has not been immune to crime. In the late 1980s with the cooperation of many families on the circle, neighborhood leader Sue Fagan created a Rainbow Circle Directory that included names, addresses, phone numbers, and emergency contacts. The information facilitated communication among neighbors and alerted them to be on watch for unusual activities. Crime soon dropped.

Then in 2008 crime started to rise again. With the housing market in decline, several homes were for sale and some were vacant. Thieves began breaking into these homes and removing appliances and especially copper piping.

It was time for the neighborhood to once again rise to the occasion. Over several weeks Susan Fagan revised her neighborhood directory, organized residents, and reestablished a formal neighborhood watch through the Old Allen police station (also called the North Precinct). Two neighborhood meetings were held at which police representatives discussed crime, its deterrence, and the importance of neighborhood vigilance.

The vigilance of neighbors to strangers and unusual activity, and the presence of police dramatically increased. The neighborhood directory had a new component, internet email addresses. In addition to the day-to-day inquiries of neighbors for lost pets or seeking reliable home services, the network has been a highly active means of alerting neighbors to strangers in the neighborhood, suspicious and criminal activity of any sort in the neighborhood, and for disseminating information from other sources.

This endeavor has seen reduced suspicious activity which is now quickly reported to the neighborhood network and to the police. Of course, such success came with the help and cooperation of many Rainbow Circle residents who hosted and attended Neighborhood Watch meetings and the Night Out event.

The story of Rainbow Circle can serve as a model for other VECA neighborhoods. It's not magic, just persistent effort that counts. Any group or person in any VECA neighborhood can initiate this.

Please note: This article, which originally appeared in the VECA Email, has been edited to fit this space. Thank you to Ben Beard, chair of the Safety and Security Committee and Brad Heinz, chair of the VECA Email system.

Who is VECA? You are VECA.

VECA, the Vollintine-Evergreen Community Association, is your neighborhood organization, composed of volunteers and residents.



Graham's
LIGHTING FIXTURES, INC.
550 SOUTH COOPER
MEMPHIS, TENNESSEE 38104
901-274-6780



Chip n' Dale's
ANTIQUE MALL
BUY • SELL • TRADE
3457 Summer Ave Memphis, TN 38112
(901) 452-5620
"At Highland"

VECA: Vollintine Evergreen Community Association

VECA is a neighborhood organization made up of volunteers and paying members. The *Vollintine-Evergreen News*, VECA Email, the annual meeting, and committee activity are the ways in which VECA communicates with its residents, and businesses, and other stakeholders. VECA is bounded by Watkins on the West, Cypress Creek on the North, Springdale on the East, and North Parkway on the South.

Contact VECA by writing to 1680 Jackson Ave, Memphis, TN 38107 or call (901) 276-1782. Visit our website www.veca-neighborhood.org

Next Issue: February 5 Deadline

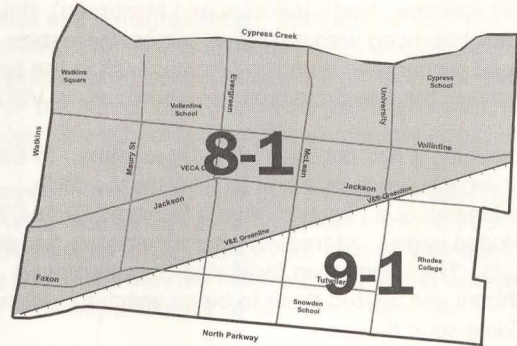
The Vollintine-Evergreen News needs articles and photos from residents and committees that provide interesting information about our neighborhood.

To be included, materials or suggestions for articles must be submitted by February 5.

Send the articles to VECA at 1680 Jackson Memphis, TN 38107 or email them to VENEWS@Gmail.com

Special thanks to Marci Hendrix and Jan Kirby for proofing this issue of the newsletter.

City Council Super District 8-1 within VECA North of the V&E Greenline Represented by Joe Brown



Going Somewhere?



We offer dog sitting and dog walking services at your convenience. Whether in the comfort of your own home or a stroll through the park, we provide loving caregivers to watch after your beloved pets. References available.

Eileen Castine

725-9216

www.mrsruff.net

Newsletter Delivery

Volunteers needed to deliver the Vollintine-Evergreen News—call 271-1782
Open routes include areas north of Vollintine Ave and West of Springdale St.

Thank you to the distributors and delivery volunteers; you make a difference in your community

Support neighborhood businesses that make the newsletter available to their customers

VECA & VECA CDC Information

VECA Board: Nedra Bailey
VECA CDC : Paul Davis and Chuck Fox
V&E News: Maura Weber
V&E Greenline: Renate Rosenthal & Len Cobb
Safety and Security Committee: Ben Beard
Neighborhood Preservation Committee: Chris Floyd
Neighbors for Trees: Marci Hendrix and André Glenn
VECA Email: Brad Heinz
VECA Welcome Center Committee: Mary Wilder
Communication Committee: TBA

Rhodes Community Development Interns funded by City of Memphis, Division of Housing and Community Development, Casey Mohan and Maura Weber

VECA Office 1680 Jackson Avenue Memphis, TN 38107
276-1782 Phone 276-1784 Fax

VECA Website: www.veca-neighborhood.org
VECA Email Announcements: news@VECA-neighborhood.org
Vollintine-Evergreen News: VECANews@gmail.com
V&E Greenline: VEGreenline@gmail.com and www.veggreenline.org

Lick Creek Flooding

On August 25, 2008, areas of Memphis received an overwhelming amount of rain in a short time. This led to high water (and some urban and basement flooding) in neighborhoods near Lick Creek. The creek was approximately 15 feet above normal, which put it at the level of the 100 year flood.

The November 2008 issue of the *Vollintine -Evergreen News* documented that City officials had underestimated the flood danger on Vollintine-Evergreen—especially on streets such as Auburndale St and Tutwiler Ave west of McLean Blvd.

The City of Memphis consultants report on Lick Creek flooding pointed out that building containment ponds was the only viable strategy for mitigating Lick Creek flooding.

VECA hopes to schedule a forum with City officials to discuss this issue.