

# VOLLINTINE EVERGREEN

## NEWS

A NEIGHBORHOOD PUBLICATION SPONSORED BY VECA, THE VOLLINTINE EVERGREEN COMMUNITY ASSOCIATION / VECA.ORG / VECA901@GMAIL.COM

WINTER 2019

# WON'T YOU BE MY NEIGHBOR?



Join VECA as we tackle fun projects like the School Supply Drive or Art Walk or National Night Out. Pictured clockwise are National Night Out. Left are school supplies neighbors provided that went to three schools.

## DEAR VOLLINTINE EVERGREEN NEIGHBORS,

Join me as a member of VECA for 2019. Mr. Rogers valued neighbors and neighborhoods and showed us how to consciously connect with our neighbors. We in VECA understand this as we work hard to be good neighbors. Please be a VECA neighbor through membership and volunteering. Please join VECA in 2019 by mailing in your membership or visiting [veca.org/join-veca/](http://veca.org/join-veca/) to pay online and join us for the annual family friendly breakfast potluck open to all neighbors.

"It is a wonderful Day in the neighborhood" every day in VECA as volunteers like you work to:

- Provide Homes for families
- Maintain the neighborhood-owned 1.7-mile-long V&E Greenline for the 65,000 neighbors and visitors who use it
- Present an Art Walk Festival in the Spring where local artists and neighbors come together in celebration
- Hold a National Night out for safety with neighbors every August
- Bring recognition and protection through the Historic Committee preparing for Landmarks Designation of VECA
- Publish the ENews, and publish a print Newsletter for VECA residents
- Hold Back-to-School Drives for Snowden, Vollentine, and KIPP Memphis Collegiate
- Make the Welcome Center available for evening and weekend community meetings and events
- Create and maintain our green spaces: Lyndale Gardens, V&E Greenline gardens, V&E Arboretum

## ANNUAL MEMBERSHIP MEETING AND POTLUCK BREAKFAST

9 am to 11:00 am  
Saturday, January 26, 2019  
St John Orthodox Church  
1663 Tutwiler

VECA provides beverages, but bring your favorite breakfast treat and join!



With your help, we can tackle the tough issues like blight.



The National Neighborhood Watch program is one of the oldest and most well-known crime prevention concepts in history that stresses community awareness and teamwork. Neighborhood Watch in Memphis was officially formulated in 1984. It is an organization which empowers local citizens to take back and maintain a better quality of

life in their respective neighborhoods. This program has shown that citizens help in the reduction of local crime by being vigilant and by partnering with local law enforcement to address the crime related issues and economical challenges within their community ([www.memphispolice.org/initiatives.asp](http://www.memphispolice.org/initiatives.asp)).

VECA is an official member of the Neighborhood Watch program. Meetings are held at Crump Station monthly the first Tuesday of each month at 6:00pm. You can share your concerns and ideas to help make our neighborhoods safe.

VECA holds quarterly NW meetings as well at the VECA Welcome Center. Meeting dates are published on the Nextdoor site and the VECA calendar at [veca.org](http://veca.org).



Crump Station (photo left)  
949 E.H. Crump  
Memphis, TN 38104  
Front Desk: (901) 636-4600  
Traffic Violations: (901) 636-4568  
GIB Local Investigations: (901) 636-4793  
Neighborhood Watch: (901) 636-4625  
[www.memphispolice.org/crump.asp](http://www.memphispolice.org/crump.asp)

**WELCOME**  
to the *neighborhood*

**Are you new to the Vollintine Evergreen neighborhood? Come by the VECA Welcome Center at 1680 Jackson Avenue during regular business hours (M-F 9am-5pm) to pick up a New Neighbor Welcome Packet with information about the neighborhood and an envelope for a membership in VECA.**

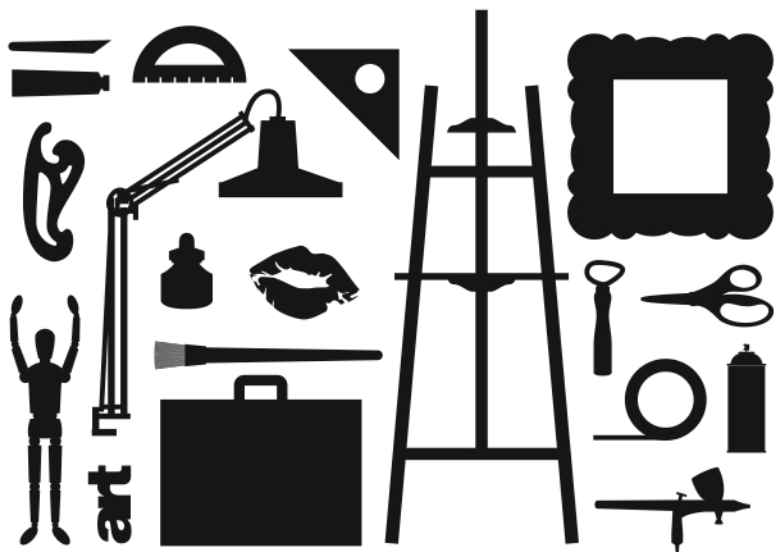
**Be Responsible!**



**Leash, curb and clean up after your dog**



Call MLGW at 320-1497 to report street light outages.



**everything**  
**art**  
**center**  
SUPPLY STORE & FRAME SHOP

1636 UNION AVENUE 901.276.6321 [artcentermemphis.com](http://artcentermemphis.com)

**Stop Litter**

**TENNESSEE'S HAD ENOUGH**

Sponsored by TDOT and Keep Tennessee Beautiful

VOLLINTINE EVERGREEN NEWS  
Winter 2019

VOLUNTEER STAFF

CO-EDITORS  
Marci Hendrix  
Chris Tague

DISTRIBUTION COORDINATOR  
Jeannie Tomlinson Saltmarsh

CONTRIBUTORS  
Suzy Askew  
Chloe Elam  
Caley Foreman  
Marci Hendrix  
Mike Kirby  
VECA Committeess

DEADLINE FOR THE NEXT PUBLICATION  
February 15, 2019  
For advertising rate sheet, or to submit ads electronically, please email  
[vecanews901@gmail.com](mailto:vecanews901@gmail.com)

VECA BOARD OFFICERS  
President Bob Rigus  
Vice President Jeff Riddle  
Secretary Karen Edwards  
Treasurer Chuck Fox

VECA COMMITTEE HEADS  
V&E Greenline Greg Lieberman  
Housing Chuck Fox  
Neighborhood Networks Lilly Gilkey  
Blight Busters Chris Floyd  
Communications Marci Hendrix

VECA is a neighborhood organization made up of volunteers and paying members. The newsletter, VECA email, annual meeting, and committee activities are ways in which VECA communicates with its residents, businesses, and other stakeholders.

The VECA area is bounded by Watkins on the West, Cypress Creek on the North, Springdale on the East, and North Parkway on the South.

VECA  
1680 Jackson Avenue  
901.276.1782  
Website and Calendar: [veca.org](http://veca.org)  
Email: [veca901@gmail.com](mailto:veca901@gmail.com)

*Church of the Good Shepherd*

*An Episcopal Church Organized in Memphis in 1865*



*My sheep hear my voice, and I know them, and they follow me. And I give them eternal life. -John 10:27*

Church of the Good Shepherd  
The Rev. William N. Fry III, Rector  
1971 Jackson Avenue  
Office: 901-725-9768  
Services: Sundays, 7:30 and 10:30 am  
Wednesdays, 10:30 am

## Giving to VECA

In addition to being a dues paying member of VECA, there are several other ways you can contribute financially to the neighborhood:

**Amazon Smile** : Amazon Smile supports VECA and the V&E Greenline when you shop. You can shop at Amazon and make a donation to the Vollintine Evergreen Community Association of 0.5 percent of the purchase price. This donation is made by Amazon, with no charge to the customer. The funds will be equally split between VECA's most visible projects: The V&E Greenline and the VECA Welcome Center. If you shop at Amazon, please sign up to have a donation made to VECA. You will be shopping at AmazonSmile.com, which is the same as regular Amazon with a different screen. Here's how you sign up for the donation:

- Go to the website: [smile.amazon.com](https://smile.amazon.com) and sign in to Amazon
- In the box that says "pick your own charitable organization," type in Vollintine Evergreen Community Association and search.
- Next, select Vollintine Evergreen Community Association

**United Way:** Donate to VECA Through United Way. The United Way campaign allows you to donate directly to VECA! United Way donations are used by many nonprofit organizations and is a great opportunity for you to give to your neighborhood! To Donate to VECA: use the back of the yellow sheet of the United Way form. The bottom of Item 3 has the following statement: "You may also support another health and human services organization in the United Way of the Mid-South service area." Enter VECA or Vollintine Evergreen as the agency name and the amount. Please contact VECA at 276-1782 or [veca901@gmail.com](mailto:veca901@gmail.com) for any questions or to let us know about your contribution!

**Kroger Plus Card:** Use your Kroger Plus Card and donate to VECA. Create an account on the Kroger page at: <https://www.kroger.com/communityrewards>. Once signed in, click on "My Account." In the Community Rewards section, click on "Enroll". The VECA number is 18512. Please contact us at [veca901@gmail.com](mailto:veca901@gmail.com) if you have any questions about using the Kroger Plus Card.

# A CLEANER Memphis Starts with



## Important Notice about Your City Government

If there is a blight problem in the neighborhood or near your house, it is important that you file a complaint with the City's 311 program so the problem can be documented.

- Dial 311 or (901) 636-6500 and an operator will take your complaint
- Or, go online: <https://www.memphistn.gov/government/311>



If your case is closed and it is still a problem, please file another complaint. This is the first step to ensuring that the City addresses neighborhood complaints.

Examples of blight include:

- Vacant and abandoned properties
- Properties in disrepair
- Grass and weeds over 12 inches high
- Parking on grass
- Accumulation of litter and debris

Join the effort to fight blight in Vollintine Evergreen by joining VECA Blight Busters. For upcoming events, please look for Blight Busters on the VECA calendar ([veca.org](http://veca.org))



**Memphis Police Department**


**Help your Neighborhood  
Report crime to police so they know  
where it is taking place**

**Report Drugs and Crime Anonymously**

- Police Dispatch: 545-2677 (then press zero). Listen to the prompts. You can advise the dispatcher if you want to remain anonymous
- Drug Hotline: 525-3673 is anonymous
- Gang Hotline: 528-2338 is anonymous
- Crime Stoppers: 528-2274 is anonymous
- Crump Station: 636-4631- this gets you to the front desk officer. If you are calling to file a complaint only, advise the officer that you wish to remain anonymous.
- SeniorBsafe hotline: 528-0699 is anonymous

**When reporting**

- Be specific on the address
- Be specific on the type of crime you are seeing
- Describe the persons who are the problem in as much detail as possible



Connect with Vollintine Evergreen Neighbors via Nextdoor, a private social network for neighborhoods. Go to [nextdoor.com](https://nextdoor.com) and create an account by entering your address and email address. Once the address is verified, you can connect to other Vollintine Evergreen neighbors and talk to each other about things going on in the neighborhood, whether that's exchanging recommendations on local service providers, like a contractor, a painter, a babysitter, or talking about local restaurants. People also use the site to talk about more personal things, like lost pets. Crime and prevention is a frequent topic and Nextdoor is increasingly becoming like a virtual neighborhood watch for the neighborhood. Technology is helping people become more connected, and you are invited to join the conversation.

## Common Code Violations

- Accumulation of junk, trash, and debris
- Open storage of material and furnishings
- Parking and storing inoperable (junk) motor vehicles
- Parking too many vehicles at a property (4 is max)
- Off street parking (please don't park on your yard)
- Special use/recreational vehicles and equipment
- Substandard structures and fences
- Excessive weeds, grass, trees and shrubs
- Commercial vehicles and equipment
- Abandoned and derelict structures
- General service and repair shops

Report code violations at 311



"It's my yard and I can park on the grass if I want, and furthermore, it's none of your business."



Whoa! Not so fast. Parking on the grass is a City of Memphis Code violation. Neighbors have the right to report any code violation on the books. Lawn Parking and Uncut Grass (12 inches or higher) are common code violations that neighbors turn in to help fight blight in the neighborhood.



## Landmarking VECA

### Vollintine Evergreen Community Association

Join your neighbors for a series of eight talks developed by the VECA Historic committee that tells the story of the people, urban planning, architecture, and green spaces in our neighborhood. We will discuss our development from the early days of dairy farms to the cohesive, vital neighborhood that we are today.

The majority of Vollintine Evergreen lies within four National Historic Districts, and our meeting locations center around these districts. Please attend at least one meeting focused on your district, but preferably all meetings focused on districts unfamiliar to you. Your ideas will help us define and protect the qualities that we as neighbors currently share.

Residential and commercial development, and displacement is occurring now without any formal process for neighborhood or resident input or involvement. Over its 40 plus year history VECA has shown a commitment to serving the needs of residents, from early efforts to fight blockbusting, support for environmental justice, upholding the values of racial inclusion, and grassroots engagement. We need your participation and opinions as we move toward Landmarks Designation.

#### Landmarking VECA Sessions

**Saturday, February 2, 2019, 2 pm**  
Peace Lutheran Church, 1548 Jackson Avenue  
Session 1 will focus on Vollintine (Evergreen) North Historic District  
Bounded by McLean, Vollintine, University, and Rainbow Circle

**Saturday, February 16, 2019, 2 pm**  
St. Therese Little Flower Church, 1644 Jackson Avenue  
Session 2 will focus on Vollintine Avalon Historic District  
Bounded by Stonewall, Vollintine, Evergreen, and Cypress Creek

**Saturday, March 2, 2019, 2 pm**  
Living Hope Church, 815 McLean Boulevard  
Session 3 will focus on Vollintine Evergreen Historic District  
Bounded by Watkins, Vollintine, Faxon, Jackson, and University

**Saturday, March 16, 2019, 2 pm**  
Session 4 will focus on Vollintine Hills Historic District  
Gethsemane C.O.G.I.C. Church, 1470 Vollintine Avenue  
Bounded by Vollintine, Brown, McLean, and Evergreen

To maximize neighborhood participation, the following dates and location are for those who could not make the first meetings above or would like to repeat the presentations.

These presentations will be at the VECA Welcome Center at 1680 Jackson Avenue.

**Saturday, April 6, 2019, 10:30 am**, about Vollintine (Evergreen) North

**Saturday, April 20, 2019, 10:30 am**, about Vollintine Avalon

**Saturday, May 4, 2019, 10:30 am**, about Vollintine Evergreen

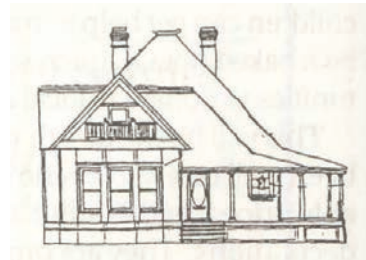
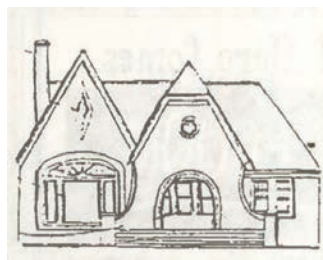
**Saturday, May 18, 2019, 10:30 am**, about Vollintine Hills

#### Landmarks Designation: a Tool for Neighborhood Preservation

Vollintine Evergreen is its residents, its buildings and its natural and public spaces. From 1997 to 2007, volunteers working through VECA successfully got most of the neighborhood designated on the National Register of Historic Places. Vollintine Evergreen's four National Register Historic Districts reflect successive building periods in the 20th century of its more than 2,000 homes and buildings.

The National Register is an honorary designation that recognizes the architectural value and social history of Vollintine Evergreen. It is important to point out, however, that this does not protect historic buildings or homes from demolition, nor can it prevent new development that is out of character with the historic architecture of the neighborhood.

The need for investment and wanting to preserve community is a tough balancing act. Cities across the nation struggle with this challenge. One of the best tools for preserving historic areas is local Landmarks designation. Each neighborhood has its own set of design guidelines that it adopted to govern demolition, new construction, and rehabilitation. Residents of each neighborhood determine what types of activities are addressed in their guidelines. All people, regardless of income, should have the opportunity to protect and preserve the history, architecture and social fabric of their community.



# V&E Volunteer of the Year for 2018

Volunteers are important to the V&E Greenline. In 2018, 259 volunteers worked 2,777 hours equaling 94 work weeks. Volunteers manage the V&E Greenline, they raise funds, staff the V&E Artwalk, address problems, and mow the trail every two weeks. Volunteers also spend countless hours removing debris, emptying the garbage cans, removing limbs and trees that fall, and participating in group cleanups. They not only use the equipment but they also maintain it. There is an amazing amount of work in owning and maintaining the trail and it is done without paid employees.

The V&E Greenline Committee presents a volunteer of the year award at their annual Holiday Party. The award is named in memory of Dick Mochow, a longtime volunteer on the V&E Greenline.

The Volunteer of the Year for 2018 is Joshua First.

Joshua serves as volunteer coordinator of the V&E Greenline. He recruits volunteers for the V&E Artwalk and quarterly cleanups. Joshua also manages the website and social media.

Joshua founded and manages the children's art competition for the V&E Artwalk. At the Artwalk, he supervises the food servers and is the key contact with the Midtown Rotary Club which works in the food both.

Joshua participates in the many cleanups of the V&E Greenline and serves on the V&E Greenline Committee. He is a great public relations spokesperson for the V&E Greenline. Joshua and his family live a half block from the trail and he is involved in other community activities, especially at Snowden School where his children attend. Congratulations to Joshua First, and thank you for your service to the V&E Evergreen neighborhood!



The V&E Greenline Volunteer of the Year for 2018, Joshua First.



Memphis 3.0 has released a draft comprehensive plan for public review. You can find the district priorities to nurture, accelerate, or sustain for the Core City (pages 222- 233) and North (pages 272 - 281).

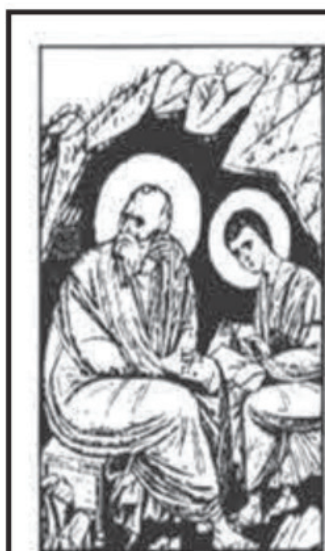
<http://www.memphis3point0.com/>  
[https://www.dropbox.com/s/ff4xw25wa2cxyf4/Memphis\\_3.0\\_Plan\\_PUBLIC\\_DRAFT121418.pdf?dl=0](https://www.dropbox.com/s/ff4xw25wa2cxyf4/Memphis_3.0_Plan_PUBLIC_DRAFT121418.pdf?dl=0)

Comments will be accepted from now until Friday, February 8th, allowing one week for revisions before the Thursday, February 14th Land Use Controls Board Meeting.

To make comments, please submit them via:

- Email at [info@memphis3point0.com](mailto:info@memphis3point0.com)
- Facebook messenger: <https://www.facebook.com/Memphis3point0/>
- Or Mail for Fax:

Office of Comprehensive Planning  
125 N. Main Street Suite #468  
Memphis, TN 38103  
(901) 636-6603 (fax)



## St. John the Evangelist Orthodox Church

Sunday  
Orthos at 9 am • Liturgy at 10 am

Weekdays  
Wednesday Vespers at 5:30 pm  
Saturday Great Vespers at 5:50 pm

1663 Tutwiler Avenue  
at Dickinson  
(901) 274-4119  
[www.stjohnmemphis.org](http://www.stjohnmemphis.org)



VECA Neighbor  
Since 1987

**Garnette Stephens**  
ABR, CRS, GRI, SRES



BUYING, SELLING, or RELOCATING?  
For the professional, personal service  
you deserve, let me be your Realtor!

EXPERIENCE • KNOWLEDGE • INTEGRITY

901-848-1937 Direct  
901-685-6000 Office  
901-685-9090 Fax  
[GarnetteStephens@remax.net](mailto:GarnetteStephens@remax.net)  
Each Office Independently Owned & Operated



# National Night Out, August 7, 2018

The National Night Out website describes the event as “an annual community-building campaign that promotes police-community partnerships and neighborhood camaraderie to make our neighborhoods safer, more caring places to live. National Night Out enhances the relationship between neighbors and law enforcement while bringing back a true sense of community. Furthermore, it provides a great opportunity to bring police and neighbors together under positive circumstances.”

The sense of community was on display at the VECA National Night Out. Folks come together to enjoy each other and to say thanks to our Memphis Police Officers and Firemen. This year, we had the special treat of watching forging demonstrations by the Metal Museum staff. Thank you to VECA volunteers and Mercy Hill Church for helping with the logistics for the event!





St. Jude Children's  
Research Hospital

# Memphis Marathon



North Parkway was decked out for the St. Jude Memphis Marathon, December 1, 2018. The route always goes along North Parkway, but for the third year, the route went into the heart of Vollintine Evergreen neighborhood, bringing runners from around the country to enjoy our historic charm. Thanks to everyone for coming out to cheer! Congratulations to the many Vollintine Evergreen neighbors who trained hard to run the event and support the children of St. Jude Children's Hospital. We are proud of you!

Photo below is of the Rhodes Field Hockey Team supporting their friend, Maddie.



# MAINTAINING THE MEDIANS

REPRINTED FROM SUMMER 2018 ISSUE

If you've spent any time on Nextdoor lately you've noticed a lengthy conversation about tall grass on the medians. Neighbors wanted to know why the Parkways were looking so shabby. It turns out that a number of the roads in our neighborhood are considered state highways. East Parkway, North Parkway, Jackson Avenue, Broad, and Summer are all state highways.

As of the new fiscal year that began July 2018, the State Department of TDOT (Tennessee Department of Transportation) is assuming responsibility for maintaining these roads. Previously, Memphis and the state had contracted together for Memphis to maintain the state highways in Memphis. For years the city paid more than what was in the state's contract to mow. However, the city has now released the contract and the state will be responsible for maintaining the designated state roads in Memphis.

Neighbors are not pleased with this change, as the state has a different approach to maintaining the roads than Memphis does. The state will mow less often (four times a year) and will not tend to the medians

aesthetically. Concerned neighbor, Chloe Elam wrote to TDOT district operations engineer Brandon Akins, who replied:

"The State is responsible for providing a level of service that is consistent across the State of Tennessee. That level of service depends on the type of route. For example, interstate routes receive five mowing cycles and all other state routes receive either three or four cycles. All hazardous conditions are responded to ASAP.

"There is a process for any and all cities to supplement the level of service provided. This process has been offered to the City of Memphis. Other cities across the state have chosen to supplement to differentiate their area from others and assist with blight. I would recommend contacting your local representative and expressing your concerns."

Contact your Tennessee General Assembly member and ask why Memphis is not getting the same level as support as other cities in Tennessee. 🙄

## TN STATE ROADS IN SHELBY COUNTY:

East Parkway/ part of Airways (TN 277)	Walnut Grove Road west of I-240 (TN 23)
Jackson Avenue (TN 14)	Third Street/ B.B. King (TN 14)
North Parkway/ A.W. Willis east of Second (TN 1)	Bill Morris Parkway (TN 385)
Union Avenue east of Second (TN 3)	Covington Pike (TN 204)
Dr. Martin Luther King, Jr. Boulevard east of Second (TN 278)	Germantown Parkway (TN 177)
E.H. Crump Boulevard (TN 14)	Getwell Road/ New Getwell Road south of I-240 (TN 176)
Danny Thomas Boulevard / Thomas Street (TN 3)	Lamar Avenue (TN 4)
Elvis Presley Boulevard / Bellevue Boulevard south of Union (TN 3)	Shelby Drive east of Third (TN 174)
Poplar Avenue east of East Parkway (TN 57)	Stage Road (TN 15)
Second Street south of Chelsea (TN 14)	State Route 300 – I-40 Thomas Street Connector Summer Avenue (TN 1)
	Weaver Road south of Shelby Drive (TN 175)

## TENNESSEE GENERAL ASSEMBLY:

<http://www.capitol.tn.gov/>  
<http://www.capitol.tn.gov/house/members/>

Mark White, District 83  
Joe Towns, Jr., District 84  
Johnnie Turner, District 85  
Barbara Ward Cooper, District 86

Karen Camper, District 87  
Larry J. Miller, District 88  
John J. DeBerry, Jr. District 90  
Raumesh Akbari, District 91  
G.A. Hardaway, District 93  
Antonio Parkinson, District 98

[https://en.wikipedia.org/wiki/Tennessee\\_House\\_of\\_Representatives](https://en.wikipedia.org/wiki/Tennessee_House_of_Representatives)





# UPDATE

# JACKSON AVENUE

There's a theory that says that one broken window leads to more broken windows, which leads to people feeling defeated, which leads to broken windows becoming the norm. The analogy works for blight, trash, crime, and right now fits well for issues along Jackson Avenue.

Jackson Avenue runs through the center of Vollintine Evergreen and is a state-owned highway (Highway 14). Over the years, neighbors have planted flowers and trees to make the avenue more appealing. At the first sign of spring there will be the daffodils popping up along the avenue. The daffodils are an annual gift to you from your neighbors. We also have neighbors to thank who regularly pick up trash on Jackson Avenue by their street.

A sense of pride comes from our taking care of this main street of ours. Yet we have a challenge facing us and we need your help. In July 2018, with the new fiscal year, the City of Memphis declared that they would no longer support state routes. (See article on previous page)

After the announcement, there was some backlash by neighbors around Midtown, and the City relented and in late summer sent out crews to mow and pick up trash. However, what will happen when spring arrives? Will Vollintine Evergreen neighbors have to keep pressuring the State and the City to mow?

This decision by the City of Memphis may make fiscal sense, but it does little to help Vollintine Evergreen with its ongoing fight with blight. Neighbors, let's be diligent to keep an eye on this issue – let's keep our neighborhood looking presentable and convince the City and State to do the right thing.

We have another problem along Jackson Avenue. Why do people park on the grass instead of the driveway or street? The code states: "No person shall park or store any motor vehicles on any surface that is not constructed of concrete, asphalt, or other approved hard surface that is made of a dustless material."

Parking on the yard may not seem like a big deal, but it conveys a message that we don't care about our neighborhood. If we don't care for our neighborhood, who will? In any event, it is a code breach. Some may suggest talking to your neighbor because, who knows, maybe they don't know the law. If you're uncomfortable talking to your neighbors directly, there is a safe avenue for reporting a breach.

Report issues to City of Memphis online via:  
<https://memphistn.gov/government/311>

Report issues via the City of Memphis 311 Call Center: 901.636.6500

The City also has an online map that shows open and closed cases. You can see if a complaint has been filed on a problem, or follow up on the issue you have reported.

<http://mapgis.memphistn.gov/applications/iTracker/#/defaultmap>

**Let's show our neighborhood pride to the folks driving through our area!**



Mary Frances Vookles Pitts \* 901.355.5038 \* agentp@comcast.net \* Marx-Bensdorf Realtors

*I sell houses.*  
*It's what I do!*  
*Call Me!*  
*-Agent Pitts*  
*901.355.5038*  
*Marx-Bensdorf*  
*901.682.1868*

233 Alexander • 5 Alicia • 5378 Alladin • 5680 Angela N • 274 Angelus • 287 Angelus • 243 Angelus • 1780 Applin • 26 Ashlawn • 1092 Audubon • 2526 Autumn • 434 Avalon • 4772 Aynasley • 580 Barksdale • 80 Beau Pres • 81 Beaver • 4228 Belle Meade Cove • 4237 Belle Meade Cove • 4271 Belle Meade • 574 Belle Meade • 1849 Belvedere • 672 Belvedere • 6572 Bramble Cove • 1281 Bray Park • 250 Bremington • 218 Brenrich Cv 219 • 219 Brenrich Cv 219 • 3780 Cardinal • 72 Carlos W • 1509 Carr • 1516 Carr • 1555 Carr • 1563-65 Carr • 1865 Carr • 244 Center • 578 Center • 592 Center • 1426 Central • 1644 Central • 2847 Central • 347 Central Cove • 4233 Central • 698 Charles Place • 758 Charles Place • 816 Charles Place • 822 Charles Place • 3740 Central Square • 4221 Charles Square • 69 Cherokee • 88 Cherokee • 104 Cherry • 196 Cherry • 41 Cherry • 482 Cherry • 54 Cherry • 546 Cherry • 55 Cherry • 4374 Cherry • 343 Chuckwood • 4669 Cole • 5476 Collingwood • 585 Country Club • 2219 Court • 2095 Courtland • 2006 Cowden • 1849 Cowden • 1915 Cowden • 2116 Cowden • 999 Cowden • 3149 Cowden • 3205 Cowden • 3269 Cowden • 3213 Cowden • 3616 Cowden • 791 Cypress 800 • 800 Cypress • 159 Devon • 159 Devon • 2 Devon • 674 East • 2355 Eastwood • 2264 Englewood Cove • 1858 Felix • 5521 Fiesta • 212 Floren • 64 Forest Grove Cove • 1617 Forrest • 1630 Forrest • 1693 Forrest • 1694 Forrest • 1696 Forrest • 9799 Frank Road • 3345 Galloway • 4001 Galloway • 4007 Galloway • 4001 Galloway • 4026 Galloway • 4008 Galloway • 4001 Galloway • 4001 Galloway • 5545 Glen • 1730 Glenwood • 1390 Goodbar • 1430 Goodbar • 552 Goodland • 104 Good • 65 Goodlett N • 65 Goodway Lane • 294 Goodwyn • 425 Goodwyn • 227 Goodwyn W • 693 Grand • 4221 Grandview • 8238 Green Gate Cove • 6639 Green Shadows • 241 Greenway • 460

901.682.1868 \* Mary Frances Vookles Pitts \* 901.355.5038 \* agentp@comcast.net \* Marx-Bensdorf Realtors

# Recent V&E Greenline Clean Ups



Belmont University Students

Recent clean ups along the V&E Greenline brought great help from all around. In October, over 20 people turned out to work on the west end of the trail, including a number of Rhodes College students.

Many thanks to Serve901 and Jeff Riddle for connecting us with students from Belmont University, Nashville, TN. They worked on the trail in October and accomplished a lot along the trail between Dickinson and Belvedere.

Rhodes students helped again on November 11th. Volunteer Stacy Pennington said, "I think the students got a lot out of it, and I love the fact that they can be rewarded every time they use the Greenline, right near their campus, by seeing the effect of their good work."

Many thanks also to the neighbors who helped in December with a downed tree between McLean and University!

Thank you to all the volunteers for helping us keep the V&E Greenline green and clean!



Rhodes Students



West End Volunteers

## Don't Monkey Around: Ready, Set, Prep!

Excerpts used with permission ([sugarcreekgardens.wordpress.com](http://sugarcreekgardens.wordpress.com))

Monkey grass is also known as Lily Turf or Liriope Grass and is pronounced (lir-RYE-oh-pee). Liriope is a tough ornamental, groundcover plant. It survives in full sun or deep shade, wet or bone dry conditions. It will stop erosion on even the steepest hillsides. It will spread and fill in quickly. Weeds don't stand a chance in the thick mass of solid Liriope.

There are two types or species of Liriope Grass. The spreading type, Liriope spicata, that when planted in direct sunlight will spread and smother everything in its path that's not substantially larger than it – like a tree. Liriope spicata planted in part sun or shade will spread at a slower rate.

Type two is Liriope muscari which is the "clumping" kind that does not spread by runners and basically stays where you put it. It blooms purple and it shares all the good qualities of the spreading kind – incredible toughness and adaptability, without the invasive behavior.

Liriope stays evergreen all winter, but looks tattered in the spring. Late winter is the time to trim Liriope/monkey grass while it is dormant. Sheer off the top growth to remove old leaves from the previous year by trimming the Liriope foliage 4-6 inches from the soil level. It can be cut by hand, weed whacked, or mowed. If you look closely, you will see the new growth shooting up. Cutting back the old growth will allow the new growth to freshen things up. New growth will emerge in the spring and summer months.



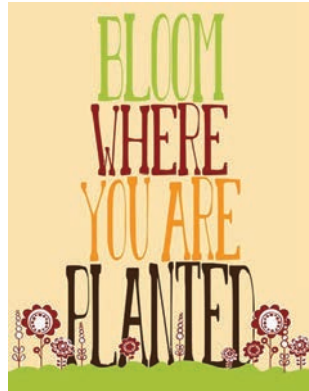
Monkey Grass before cutting in spring

Monkey grass after mowing

New emerging Monkey Grass

# Volunteer with VECA

We need you! Here are some of the ways you can help in the Vollintine Evergreen neighborhood and with VECA, your community association. **For more information, please email us at [veca901@gmail.com](mailto:veca901@gmail.com). We look forward to working with you!**



VECA is a member of BLDG Memphis (Build. Live. Develop. Grow.) and needs a rep to attend their monthly meetings, which are held the second Tuesday of the month at 9:00am at the VECA Welcome Center.

VECA is participating with Crosstown and Klondike-Smokey City to plan events to meet the criteria of becoming a Healthier Tennessee member. We need volunteers to help with this initiative.

VECA owns rental property. Volunteers are needed to do small tasks when the units go vacant and prep work needs to be done for new tenants, such as cleaning, painting, providing access to contractors, and other tasks. Another volunteer is needed to be part of a team to examine properties quarterly to identify preventive maintenance and minor work orders were done for the units in order to avoid major repairs.

Neighborhood Preservation opportunities include attending meetings. Identifying problem properties via quarterly driving surveys and reporting to the City of Memphis or Shelby County Government. There are occasional volunteer days to do litter cleanup of problem streets. The committee needs volunteers to help at the Lyndale Community Garden where they hold workdays to plant, weed, harvest, cleanup, and mulch the garden.

Neighborhood Networks needs help with planning events such as National Night Out and the VECA Holiday Party. The Neighborhood Watch subcommittee holds quarterly meetings to discuss crime prevention issues. They also host Cop Stop luncheons.

The Membership Committee needs volunteers to recruit neighbors to join VECA and be ambassadors for Vollintine Evergreen by increasing VECA's connections in a positive way with neighborhood residents

The V&E Greenline needs help at group cleanups such as trimming overgrowth. There is a need for volunteers to adopt sections of the trail and come out on their own time to do tasks such as picking up limbs, picking up litter, and doing other tasks. There is a need for volunteers to be involved in activities such as going to meetings to represent the V&E Greenline, delivering brochures door to door, taking photographs, taking minutes at meetings and many other activities.

The V&E Artwalk is a major undertaking and volunteers are needed to help plan the event and adopt a task that they follow through until the event. In addition, there is a need for 50 volunteers to work on the day of the event in activities such as helping artists move items to their booth sites, staffing the information booth, helping serve food, acting as crossing guards, and many other tasks.

Historic Committee volunteers are needed to help promote Vollintine Evergreen's history, architectural character and value, streetscapes, landscapes, neighborhood buildings and design characteristics through public information, special projects, and events. Help with addressing issues related to the neighborhood's architectural character and value, compliance with current City of Memphis and Shelby County Office of Planning and Development and Construction Code Enforcement regulations (like by attending Memphis Landmarks Commission and Land Use Control Board meetings). Additional volunteers are needed to help fundraise, write grants, update/create the VECA timeline of neighborhood projects accomplished by reviewing old newsletters (this is a project that can be done online).



Greenspace/Garden Club. Volunteers are needed to help beautify our V&E neighborhood, one garden/greenspace at a time. Gardening the flower bed at VECA, Green Triangles at University and Hallwood, Dlugach Park, litter pickup along the Jackson Avenue medians, advocate for clean and safe use of the two streams (Lick Creek and Cypress Creek). 🦋

## Volunteers Clear Fallen Tree on Greenline

Rain fell hard in the hours leading up to New Year's Eve day. MLGW reported that 26,000 people lost power that day due to the weather. Many households in Vollintine Evergreen lost power as well. Some for a couple of hours and some for almost 24 hours. On the V&E Greenline, the ground was saturated enough for a large tree to fall and knock out power lines. Volunteers cleared the trail and V&E Greenline hired a tree company to remove the fallen tree.





**V&E**  
**ARTWALK**

**BENEFITS MIDTOWN'S V&E GREENLINE**  
FEATURING MEMPHIS ARTISTS SELLING THEIR CRAFTS

**APRIL 13**

SILENT AUCTION FOOD AND DRINKS CHILDREN'S AREA  
1625 TUTWILER VEGREENLINE.ORG 901-276-1782