

Vollintine Evergreen news

VECA901@GMAIL.COM

FALL 2019

VECA.ORG

ANOTHER SUCCESSFUL NATIONAL NIGHT OUT

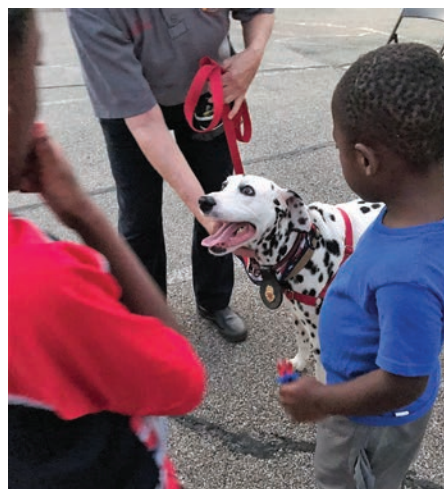
by Elizabeth Mueller

Vollintine Evergreen celebrated National Night Out on Tuesday, October 1. National Night Out is a nationwide event which promotes safety and community amongst residents of the neighborhood association. An event usually in August, this year the nation-wide committee for National Night Out decided to give people the choice between August and October. Memphis chose October for the first time this year with hopes of cooler temperatures. No such luck, as the thermometer read upwards of 90 degrees.

Nevertheless, neighbors gathered around refreshments, hot dogs, games for the children, and casual music. It was a welcoming atmosphere with the friendly faces of parents willing to start a conversation with those around them

while children blew bubbles and utilized the hula-hoops. The children were most impressed with an appearance by Memphis police officers and their patrol car and Izzy, the Memphis Fire and Life Safety dog. It being two days prior to elections, there was definite political canvassing, and La'Tara Chandler of Youth Villages attended to promote the foster care system. Although she lives in Cordova, she traveled to Vollintine Evergreen to spread the word about the need for foster families.

Tiffany Nason, a resident of the neighborhood for five years has participated in National Night Out since her family's very first year here. With her husband, Matt, a Memphis Police officer, she personally feels the support from family and law enforcement in the community. She appreciates that the neighborhood is "very engaged... a place where everyone treats each other as family." Tiffany along with many residents find comfort in the Vollintine Evergreen environment, one focused on safety with everyone looking out for one another. This year's National Night Out was a grand example of the comradery which extends beyond one night a year. 🐾



Fall 2019

TABLE OF CONTENTS

NEIGHBORS

KUDOS	2
NEIGHBOR HIGHLIGHTS	3
STORYBOARD MEMPHIS	4
SCHOOL HIGHLIGHTS	6

NATURE

GREENLINE VOLUNTEERS	5-8
GARDEN CLUB HIGHLIGHTS	8
SPRINGDALE CHURCH AND CLEAN MEMPHIS	8

NEWS

COMMUNITY DEVELOPMENT	9
PSA!	10
LANDMARKS UPDATES	11
ADVERTISING INFORMATION.....	12

CO-EDITORS

Marci Hendrix
Chloe Lane Elam

DISTRIBUTION COORDINATOR

Jeannie Tomlinson Saltmarsh

CONTRIBUTORS

Suzy Askew
Chloe Elam
Caley Foreman
Marci Hendrix
Mike Kirby
Elizabeth Mueller
Lilly Gilkey

VECA BOARD OFFICERS

President Bob Rigus
Vice President Jeff Riddle
Secretary Karen Edwards
Treasurer Chuck Fox

VECA COMMITTEE HEADS

V&E Greenline - Greg Lieberman
Housing - Chuck Fox
Neighborhood Networks - Lilly Gilkey
Blight Busters - Chris Floyd
Communications - Marci Hendrix

DEADLINE FOR THE NEXT PUBLICATION NOVEMBER 30, 2019

For advertising rate sheet,
or to submit ads electronically,
please email
vecanews901@gmail.com

VECA is a neighborhood organization made up of volunteers and paying members. The newsletter, VECA email, annual meeting, and committee activities are ways in which VECA communicates with its residents, businesses, and other stakeholders.

The VECA area is bounded by Watkins on the West, Cypress Creek on the North, Springdale on the East, and North Parkway on the South.

VECA
1680 Jackson Avenue
901.276.1782
Website and Calendar: veca.org
Email: veca901@gmail.com

KUDOS TO OUR VECA NEIGHBORS!

Native Plants of Tennessee: A Book of Lists



A Book Produced by
The Tennessee Federation of Garden Clubs, Inc.



Congratulations to neighbor **Suzy I. Askew** on the publication of her new book, *Native Plants of Tennessee: A Book of Lists*. This book serves as a companion to any of Tennessee Native Plant Guides to make it easier to choose one for a design project. It contains about 200 of the garden worthy natives of our state and about 200 lists that they are assigned. Examples of these lists include plants by type-trees, shrubs, perennials grasses, bog plants; bloom colors, size, pollinator plants, dye plants, edible, medicinal and a chapter for children. Being able to substitute a high functioning native plant when replacing an undesirable plant is now just matter of deciding which one suits your purpose and finding it locally. The books are \$20 with all proceeds going to the Native Plant Book Fund of the Tennessee Federation of Garden Clubs, Inc. Books are available at Wild Birds Unlimited on Mendenhall and Palladio Garden Center on Central. 🐝



Congratulations to **Tom Bailey** on winning first place in the Division 1 Business News category for Marked Up: Running a business with a face tattoo at this year's Tennessee Associated Press Broadcasters and Media Editors competition.

See his award winning article at <https://dailymemphian.com/article/1936/Marked-up-Running-a-business-with-a-face-tattoo> 🐝



VECA Neighbor
Since 1987

Garnette Stephens
ABR, CRS, GRI, SRES



BUYING, SELLING, or RELOCATING?
For the professional, personal service you deserve, let me be your Realtor!

EXPERIENCE • KNOWLEDGE • INTEGRITY

901-848-1937 Direct
901-685-6000 Office
GarnetteStephens@aol.com
Each Office Independently Owned & Operated.

RE/MAX REAL ESTATE EXPERTS
1930 Exeter Road, Germantown, TN 38138

NEIGHBOR HIGHLIGHT: NOBUKO IGARASHI

by Elizabeth Mueller

Nobuko Igarashi leads a full life of family and work responsibilities. However, she finds the time to follow her lifelong passion of music through playing the clarinet in Luna Nova Music and the bass clarinet in the Memphis Symphony Orchestra. A native of Memphis, Nobuko and her husband, Matt, moved to the Vollintine Evergreen neighborhood eighteen years ago. Living in the same house for that length of time, it is a place where she has cultivated family and neighborly relationships with those around her.

Nobuko describes her family as supportive. In a household of two working adults and an active child, it is necessary to mutually carry the weight of responsibilities. With all the busy schedules, Nobuko readily admits she could not navigate the days without her husband. Her son, Masato, offers a different sense of relief by providing Nobuko with a smiling face and energetic spirit outside of her work.

When first buying the house, she notes, "I landed in this area without much knowledge of it." Her neighborhood passion became the Greenline which she describes as the "anchor of the neighborhood." She always volunteers when she is available as her way of while contributing to VECA. She also has kind words for the North Branch Library, which she feels connected to as she, herself, works at the Central Library. Both the Greenline and the library bring Nobuko closer to the Vollintine Evergreen community. The community is a creative one according to Nobuko as she finds

herself surrounded by artists and musicians of all types. Of course, Nobuko contributes to this arts scene with her musical talent with the clarinet.

She did not always know she would become a musician, but music was an ever-present aspect of Nobuko's young life. She recalls her mother loving music with a deep passion, and it is from such an influential figure that Nobuko's interest followed.

Attributing the progression of her musical curiosity to strong band programs through junior high and high school, Nobuko continued playing outside of school in youth programs. It was in junior high that Nobuko started playing the clarinet, seemingly accidentally. When the school band started, each student chose an instrument. She admits she wanted to play the tuba in that moment, but as fate would have it, the clarinet fell into her hands.

Since the beginning of her career to now, Nobuko continues to gain life lessons such as communication, discipline, and working with others. Reading notes on sheet music teaches her an "alternate language in which to communicate with the world." Discipline that comes from practicing, setting goals, and meeting deadlines is a challenge but is important to Nobuko. Through sharing the stage and playing with others, Nobuko discovers blooming friendships, a growing diversity of music, and a respect for others by simply listening. She believes an important experience for all musicians is learning how to create music through working together with others.



Nobuko Igarashi with Daniel Gilbert, Kelly Herrmann, Robert Patterson, Paul Murray

While it is important to learn from one's mistakes in music, Nobuko speaks to an unequalled excitement and adrenaline which performing for an audience fulfills. For a moment, those feelings surpass any critiques of the performance and there is simply a connection between her and her clarinet.

Nobuko has been the clarinetist for Luna Nova Music since its beginning in Memphis in 2006. The mission of Luna Nova Music is to support "performances of a wide range of twentieth century classics, music of established living composers, and premieres by emerging composers. With concerts, masterclasses and private instruction, Luna Nova Music maintains a strong commitment to the education of performers and listeners, and to the

cause of new music in educational institutions and beyond." The ensemble is led by Patricia Gray, President of Luna Nova Music. Concerts are always free, accessible, and enjoyable for any and all audience members. An interesting aspect of the ensemble is its commitment to supporting the work of group members and emerging composers. At times, the ensemble will perform pieces from their own composers, and other times visiting composers will be invited to work with the ensemble for a period of time to foster their individual composition.

For more information about Luna Nova Music, visit their website at www.lunanova.org. 🗨️

NEIGHBOR HIGHLIGHT: ANDREW GINN

My family and I moved to V&E in May of 2017. Our mission was to be closer to our church, Mercy Hill, and to begin to get to know and serve our neighbors. In the past two years, we've had several opportunities to do just that. Whether it's the V&E Art Walk or Greenline cleanup projects, we love being able to be involved in this way.

In January of 2019, I came on as the full-time Associate Pastor at Mercy Hill. One of my main areas of ministry is to our Youth. It's been a joy to minister to our Students and when we can combine that with serving out neighborhood, it's a home run.

Back in May, we partnered with Faith Baptist Church's Student Ministry to clear bamboo on the Greenline section between Belvedere and Evergreen. This was a great opportunity for Mercy Hill's kids to really serve their neighbors. Additionally, having kids from Bartlett come to V&E and help clean up and spread the word about Mercy Hill was amazing.

I have to thank Mike Kirby for his leadership on that and the other projects we've been a part of. His love for this neighborhood is inspiring. And the kids worked so hard – Mike had three days of work lined up for us that

took us about a day and a half to complete!

A few weeks ago we were able to bring a few Mercy Hill students to help clear the bridge and Blue Kids area near Crosstown and once again we had a great time serving and just being with neighbors. (see bottom left photo on page 5).

A few months back, we began seeing some new faces at our Youth meetings at Mercy Hill and were thrilled to meet the students from All Saints Presbyterian Church. Since then they've become a partner in our Youth ministry and regularly meet with us. We look forward to what we

can do with them to further serve the neighborhood.

Again, thinking back to when we moved into the neighborhood, my wife and I have always been struck by the level of community involvement, care for neighbors, and civic pride we see here in V&E. We're thankful to be here and look forward to continuing to love and serve our neighbors, just as we are called to do. 🗨️

Thank you, Andrew, for the VECA love! If you have a memory or shout out to our neighborhood, send your thoughts to us (vecanews901@gmail.com) to be published in future newsletters.

VOLLINTINE EVERGREEN: A GREAT PLACE TO CALL HOME

by Marci Hendrix

Midtown's Vollintine Evergreen neighborhood is a National Historic District. Most of the homes in the neighborhood were built in the 1920s and 30s, and include well-preserved Tudors, Craftsman, and Spanish bungalows as well as Colonials, Cape Cods, Foursquares, and even some Mid-Century Modern homes. Vollintine Evergreen has restaurants, businesses, churches, and is home to Rhodes College, Snowden School, Vollintine Elementary, and KIPP Memphis Academy.

Vollintine Evergreen is a great place to live, raise a family, as well as retire. **Caley and Allyson Foreman** moved to the neighborhood in the early 80s and they look forward to retiring here. Now grown, they remember their children having lots of kids on their street to play with through the years. Close proximity to the downtown, the Memphis Zoo, and music venues like Levitt Shell and Overton Square are just a couple of reasons why they want to stay right here in Vollintine Evergreen.

Tom Kirby has lived most of his life in the Vollintine Evergreen neighborhood. He attended Vollintine Elementary and Snowden School. He remembers playing basketball with friends, riding bikes to nearby Overton Park, and honing his volleyball skills on the MLGW

field between Hawthorne and Auburndale. Nowadays, Tom and his family, Betsy and son Jordan, make service a priority. Tom delivers newsletters and he mows a section of the V&E Greenline. Every year the family helps organize and prepare food at the V&E Artwalk. The Artwalk raises awareness about sustaining the V&E Greenline as an important asset, and is also an outlet for local artists to gain exposure while highlighting the thriving art community that exists here in the Memphis.

An art enthusiast herself, **EJ Kessler** moved back from California to live in the home her grandfather purchased in 1935. It was during the Depression and he had purchased several houses as rental investments. One early occupant in the house was a furrier. He lived in one part of the house and installed a metal door in another section to make it a temperature-controlled workshop. The door still stands as a reminder of the house's history. In 1967, EJ's parents decided to move into the house and they lived there for the next 43 years. The family lived in the home during the 1968 riots after MLK's death. EJ remembers the National Guard keeping curfew on the corner by posting tanks pointing in each direction. As a precaution, they repeated the curfew the next year coinciding

with EJ's wedding weekend. The evening rehearsal and dinner could not happen, but everything else went off without a hitch! Like many in the neighborhood, EJ has so many memories of Memphis and the neighborhood that make it the fascinating place it is.

Lilly Gilkey, has lived in Vollintine Evergreen since 1974. She served on the VECA board in the mid-80s for a short period. "I enjoyed being a part of making the place where I lived better. I was on the board for less than two years before motherhood took precedence." After raising her two children, Lilly rejoined the board in 2006. She served as president for three years and every year coordinates the National Night Out event. "There will always be challenges, but it is gratifying to work on opportunities that make our neighborhood greater."

The Vollintine Evergreen Community Association (VECA) was founded in 1970 to increase communication in the diverse neighborhood. VECA was solely a volunteer, grassroots organization until 1995 when it received a large grant. With the funds, VECA rehabilitated housing, purchased the abandoned railroad route that became the V&E Greenline, hired staff, opened an office, developed block clubs, and

rezoned the neighborhood to mostly single-family zoning. The economic conditions of 2008 led to VECA transitioning back into a volunteer-driven organization. Volunteers are managers of the remaining VECA owned houses which help provide funding for its central headquarters, the Welcome Center. VECA remains involved in a wide variety of activities supported by the neighborhood including code enforcement; safety and security; managing the V&E Greenline; working on problems in the commercial districts; working to increase resident involvement; and supporting a number of popular events in the neighborhood.

With a spirit of volunteerism, community involvement, empowerment, and a resilience, Vollintine Evergreen is a great place to call home. We'll see you on the Greenline! 🐾

A version of this article will run in an upcoming issue of StoryBoard Memphis, a local publication dedicated to sharing the stories of Memphis.



Left to right: Neighbors Allyson and Caley Foreman, Tom Kirby, EJ Kessler, and Lilly Gilkey with her two grandsons

VOLUNTEERS PERFORM MUCH NEEDED WORK ON V&E GREENLINE



Left: Overgrown branches were starting to block the trail. Right: A cleaned and clear path thanks to volunteer efforts. Photos: Kjeld Petersen

By Joshua First
photos below by Jan Kirby

On Saturday morning, September 21, VECA volunteers, along with the Mercy Hill Church youth group and members of Boy Scout Troop 13 from Trinity UMC in Midtown, congregated at the West End of the V&E Greenline. After a week of near-100 degree weather in Memphis, the temperature finally dipped below 95 on Saturday, making it possible for this group of 20 volunteers to make a difference on this critical part of the trail.

Since the completion of Crosstown Concourse, the West End of the trail has seen an increasing amount of traffic, and yet volunteers from both the V&E Greenline and Crosstown CDC have struggled to keep up with maintaining an area with lots of trees, a major bridge, not to mention the famed "Blue Kids" sculptures. On this Saturday, however, volunteers significantly improved the area by trimming and pruning the many trees, cleaning out the overgrown brush, and sweeping out the Crosstown Connector Bridge.

One of the volunteers, Kjeld Petersen, photographed the area before and after the work day, and his pictures reveal a profoundly transformed space that will complement the rest of the trail.

During 2019, we have seen a significant increase in volunteer activity on the trail, which has been a boon to its survival and improvement. In addition to greater commitment from individual volunteers in the neighborhood, church, school, and community groups from around the city have stepped up and performed much-needed work on the V&E Greenline. In late May, the Mercy Hill youth group cleaned up bamboo on the Springs section of the trail and mulched the Lyndale Garden. And on Labor Day weekend, a group of Christian Brothers High School students came to clean up the area around University Ave. During October and November, another group of high school students, in addition to volunteers from Rhodes College, will continue working to clear the ever-problematic bamboo from the Springs, along with helping to eliminate other

non-native, invasive plants along "the Cut" area of the V&E Greenline.

The young people who have dedicated their weekends and school breaks to working on our community trail, not to mention the VECA stalwarts who come out to help time and time again, are truly amazing people. It is easy to forget that unpaid volunteers alone maintain this 1.7 mile greenspace, which is arguably the centerpiece of our Vollintine-Evergreen neighborhood. In an effort to improve the trail and stimulate more community involvement, the V&E Greenline Committee is organizing family-friendly (no heavy power tools involved!) volunteer days on the second Saturdays of October, November and December. Interested members of the community should meet at Kirby Station (1625 Tutwiler) at 10am on these days. 🙌

Joshua First has been a VECA resident and V&E Greenline volunteer since 2012. He can be reached at joshuafirst@gmail.com.

FALL 2019 COMMUNITY VOLUNTEER DATES

LOOKING FOR A GREAT WAY TO ENJOY THE FALL WEATHER?

VOLUNTEER ON THE GREENLINE! MEET AT KIRBY STATION AT 10:00 AM ON THE FOLLOWING SATURDAYS TO JOIN YOUR NEIGHBORS IN MAINTAINING ONE OF VECA'S

GREATEST ASSETS:

NOVEMBER 9

DECEMBER 14



VOLLENTINE ELEMENTARY SUMMER PROGRAM

by Elizabeth Mueller

The summer of 2019 was the third year of the Vollettine Elementary Summer Program. The purpose of the program is to engage the students in learning during the summer months, enriching the children until the next school year. The program is open to all students, kinder through fifth grade, enrolled in Shelby County schools.

This year, the students learned about important Memphis people and landmarks through their "I Love Memphis" projects.

Tasked with researching the history of a given landmark, each class used a mixture of recycled materials to create the final project. 🐼

Images show several examples of the work created during the Summer Program.



SNOWDEN SCHOOL CELEBRATES WALK & BIKE TO SCHOOL DAY: A CALL FOR VOLUNTEERS

The first National Walk to School Day – called Walk Our Children to School Day – was held in 1997. Since then, it's come a long way. In May 2012, the first-ever National Bike to School Day was celebrated across the USA. Events around the country, including Snowden School, are registered on the website: www.walkbiketoschool.org.

On October 2, 2019, three Snowden parents (Missy Williams, Janet Partridge and Tom Lawrence) distributed nearly 250 "Snowden School Walk & Bike" stickers to students as they arrived at school. Due to the number of students who are bused to school, they are also included if there are enough volunteers. The students are very proud of their stickers and will still be wearing them later in the day.

The next Walk/Bike to school day will be in the Spring of 2020 (based on past events it will be in early May), so **please consider volunteering**. With more volunteers, every walking, biking and bus riding student can be congratulated. It only takes 15 minutes (from 8:00 to 8:15) and is very rewarding.

Walk to School Day events raise awareness of the need to create safer routes for walking and bicycling and emphasize the importance of issues such as increasing physical activity among children, pedestrian safety, traffic congestion and concern for the environment. The events build connections between families, schools and the broader community. 🐼



Stickers volunteers handed out on Walk to School Day.

TULSA VOLUNTEERS CLEAN THE GREENLINE



Two groups of youth volunteers and chaperones from First United Methodist Church Tulsa worked on the V&E Greenline on Wednesday June 6 and 7, 2019 and had a huge impact.

The first project was to clean up the area along Jackson Ave from University St to the V&E Greenline entrance. The sidewalk was blocked by a fallen tree and the shrubbery had grown beyond the sidewalk making walking difficult. This was an important project because the area has a heavily used sidewalk, a connector for the V&E Greenline and a bus stop.

The volunteers used tools like

pruners, a hand saw, and a pole saw to remove the fallen tree, cut back limbs, trim the edge of the sidewalk, trim invasive English Ivy from around tree trunks, and pick up litter. They also moved the debris into piles that the City Solid Waste Division promised to pick up in two weeks and did pick up an initial stack of debris earlier in the day.

The students were very pleasant and friendly, and they enjoyed their work. They worked hard and effectively on a difficult project since they were between the traffic of Jackson Ave and a bank that made access more difficult. These were very special volunteers and we appreciate

their efforts. The work site was shady and there was a light breeze which made the effort more comfortable in the Memphis heat.

The second project involved removing invasive bamboo along the V&E Greenline between Jackson Ave and Springdale St in an area called the "Springs." The weather was rainy during this effort, but cool and comfortable for working. Though thoroughly soaked by the rain, the volunteers were in good spirits and removed an enormous amount of bamboo.

Their effort required cutting bamboo on the bank that was sometimes 15 feet tall, then cutting it

into sections and stacking it in a pile will be picked up later. They cleared bamboo from 1,900 square feet of area.

We thank Thad Ernst, Director of High School Ministries at FUMC Tulsa, for selecting our site for the work and for Jeff Riddle of City Leadership at Crosstown Concourse for coordinating. The volunteers stayed overnight at the "Bunkhouse" at Mosaic Church located at Mclean Boulevard and Jackson Ave and their other volunteers worked at many other sites in Memphis. We appreciate that Vollandia Evergreen can be a center of such wonderful activity. 🙌

ST. MARY'S VOLUNTEERING IN VECA

Volunteers from St. Mary's School in Memphis did some great work on the Cut section of the V&E Greenline on June 12, 2109 and we appreciate their efforts.

The section of the trail behind Good Shepherd Church had considerable growth of branches into the trail and the volunteers clipped the branches and arranged for the debris to be hauled to a disposal site. Further east, there was a stand of invasive bamboo that the volunteers trimmed and also arranged for disposal.

They were a hard-working crew

and very proactive in moving quickly in managing their tasks. They clipped enough branches to make for ten tractor loads to be hauled to the disposal site.

The trail looked great after their hard work. We thank all of the volunteers and for Sandra Pitts for making the arrangements to use the V&E Greenline as a volunteer site. The removal of the bamboo is a continuing project of the V&E Greenline which involves removing invasive species which threaten the native trees and plants on the V&E Greenline. 🙌



GARDEN CLUB UPDATE: TUTWILER BEAUTIFICATION

by Connie Shepherd

A notice went out to the neighborhood on NextDoor.com to gather on Tutwiler to pull weeds and trim some limbs on June 13.

The medians have several beds at the ends from Evergreen to McLean. These can make sight lines to traffic difficult if full of weeds. Two years ago, we began cleaning the Tutwiler medians and it has really made such a difference.

This year, we met on Tutwiler and began pulling weeds at 6:00 p.m on Thursday, June 13. The medians now look cleaner and neater. We pulled weeds in the beds. Tree limbs were trimmed on the ones that were broken from large trucks driving down our

small roads. There were two new beds added with lots of color.

I want to thank Jan and Mike Kirby, Brian Floyd, Tom Kirby, Sophia Mason, Sandy Stengel and Hurley Shepherd and all of the volunteers who keep our neighborhood looking great.

We hope to continue keeping our Green Spaces looking nice and neat. Keep your gardening gloves handy. 🙌

Thanks to all our neighbors who donated time, energy and plants. If you have any ideas for our Garden Club to enhance, please contact Connie Shepherd at cshep51@aol.com.



SPRINGDALE CHURCH AND CLEAN MEMPHIS

Source: Clean Memphis Facebook Page

We recently had the opportunity to partner with Springdale Baptist Church for their Fall Serve Day. Nestled in the heart of the Hollywood-Springdale community, this congregation has worked to serve the greater Memphis community since 1928.

In 2018, under the leadership of Dr. Kevin Taylor, Springdale renewed

their focus on stewardship specifically in the communities surrounding their church: Hollywood, Springdale, and Klondike. They launched two Community Serve Days with the goal to give back and serve hope to their community.

Community Serve Day consists of a variety of projects including: Hammers and Hearts, a minor home

repair project focused on seniors Feed the Hungry, through which congregants serve over 100 meals to food-insecure neighbors The always popular Free Car Wash (we couldn't help but take advantage of this ourselves!)

For the past two years Clean Memphis has partnered with Springdale Baptist Church for

the cleanup portion of the serve day.

"We want our church and community residents to take pride in the community in which we reside and serve. Furthermore, we want to be good stewards by doing our part to be good environmentalists. A healthy environment typically coincides with a healthier community," said Taylor. 🙌



CHATTANOOGA STUDENTS SPEND FALL BREAK ON THE GREENLINE

On Saturday October 12, ten members of a youth group from Chattanooga spent their fall break working on the V&E Greenline.

They were from East Brainerd Church of Christ College and Young Adults group. The church is involved in a wide range of projects to serve individuals and groups in Chattanooga. They were led by Stephen Walker who was very helpful. The group was very hard working, friendly and outgoing. Their group prayer at the end of the session was impressive as they reflected on their service to the community.

The group cut the large run of

invasive bamboo on the Springs section near the midpoint. In this area the long run of bamboo is choking out native trees and plants.

A special thanks to Jeff Riddle Director of Serve901 for City Leadership which is located at Crosstown Concourse for making arrangements for the volunteers. The volunteers were housed at the "Bunkhouse" at Mosaic Church at the corner of McLean and Jackson.

VECA resident Stacy Pennington also assisted and ran the trimmer which made us more efficient. He is our lead person in mowing and managing the Springs section of the V&E Greenline. 🙏



St. Mary's students clearing brush from the Greenline.

GRANT OPPORTUNITIES FOR VOLLINTINE EVERGREEN

VECA has received grant funds to study the brownfield at the BP Station at Jackson Avenue and Evergreen. Consultant Andy Kitsinger of Development Studio, LLC will work with VECA to study environmental concerns and propose plans to address these concerns short and/or long-term.

The grant also will also study the economic impacts due to Crosstown Concourse and the St. Jude expansion. The consultant will identify commercial areas with potential for redevelopment, and will conduct a market analysis of those areas.

Residents of Vollintine Evergreen will participate in the process to ensure that voices are represented in any recommendations.

Funding of the grant is provided by Building Memphis (BLDG Memphis) through the Neighborhood Collaborative for Resilience (NCR). NCR consists of North Memphis-based community development work focused on solutions to issues based through the lens of racial equity, health equity, and climate reliance. The NCR grants are part of a focused effort through the Strong, Prosperous, and Resilient Communities Challenge (SPARCC), to address continued disinvestment, top-down development decisions, and a lack of broader resident engagement throughout the

focus area within North Memphis. Through the NCR Grants, BLDG Memphis is providing support for capital development, community engagement, capacity building, and technical assistance.

VECA has also applied for grant funds through The Kresge Foundation. In April 2019, Kresge launched a grant initiative (KIP:M – Kresge Innovation Projects: Memphis) to support community-driven projects aimed at strengthening neighborhoods in Memphis. The grant is modeled after Kresge's first innovation project in Detroit. Selected projects will be announced in Memphis in September.

If VECA receives the grant, VECA has three action items to enact over the next two years. The first is to obtain control of the BP station (through purchase or long-term lease) with the goal to redevelop and prepare the site for intermediate community intervention. VECA's ultimate objective for this space would be to attract a more permanent development compatible with the neighborhood. The second step would be to pay for the design and construction documents of streetscape improvements and public art to create a more desirable and pedestrian friendly intersection. The third is to contract a part-time VECA project manager to facilitate and manage this process

throughout the two-year period. To date, all visioning efforts for this intersection has been done on a volunteer basis. Contracting with a project manager would give VECA the time and resources to push the project forward and facilitate better communication between the public and private entities that would make the project a reality.

Both of these grants build on an effort begun in 2017 in VECA when neighbors were asked to imagine what the Evergreen-Jackson corridor could be. Surveyed neighbors told VECA that the intersection was very important yet, in its current state, was very unattractive. Neighbors said they would like to see something fun and new at the BP lot. Anything from a coffee shop, to pop-up shops, a bakery – but no chain restaurants – anything that attracts people to live in Memphis in the first place.

Slowly, but surely, volunteers of VECA are working hard to make the heart of the neighborhood – the Jackson-Evergreen corridor – the attractive area it deserves to be. As it stands, the Jackson-Evergreen intersection is a traffic heavy crossing that cuts off half of the neighborhood from amenities including the V&E Greenline and restaurants. Installing new crosswalks, adding street parking, and creating spaces for public art and landscape will slow down traffic and turn this intersection into a

people-focused area that acts as a bridge, not a wall.

It will open new opportunities to connect not only with the northern half of Vollintine Evergreen, but also with the neighborhoods beyond. This intersection, as well as several nodes to the north, has been identified by Memphis 3.0 – a 20-year comprehensive plan designed by the City of Memphis—as an area that needs to be nurtured. At one time, this intersection served as the central hub of the neighborhood, but has since suffered from lasting neglect. VECA's proposal falls in line with both VECA and the city's vision of smart long term growth.

Funding for projects this size these are crucial, and VECA is grateful for the opportunity to receive funding through the BLDG Memphis/NCR/SPARCC grant, as well as to be considered for the Kresge grant (fingers crossed).

As always, please consider helping the committees that manage the grant process. Please don't think that VECA doesn't need your help! VECA may be "a well-oiled machine" but we really need your help to keep momentum and progress – we need new faces and voices around the table! 🙏

PSA!

HELPFUL REMINDERS TO KEEP OUR NEIGHBORHOOD THE BEST IT CAN BE

PEDESTRIAN SAFETY

TCA 55-8-134 - Pedestrian's Right-of-Way in Crosswalks

(a) (1) Unless in a marked school zone when a warning flasher or flashers are in operation, when traffic-control signals are not in place or not in operation, the driver of a vehicle shall yield the right-of-way, slowing down or stopping if need be to so yield, to a pedestrian crossing the roadway within a crosswalk when the pedestrian is upon the half of the roadway upon which the vehicle is traveling, or when the pedestrian is approaching so closely from the opposite half of the roadway as to be in danger.

(2) When in a marked school zone when a warning flasher or flashers are in operation, the driver of a vehicle shall stop to yield the right-of-way to a pedestrian crossing the

roadway within a marked crosswalk or at an intersection with no marked crosswalk. The driver shall remain stopped until the pedestrian has crossed the roadway on which the vehicle is stopped.

(b) No pedestrian shall suddenly leave a curb or other place of safety and walk or run into the path of a vehicle which is so close that it is impossible for the driver to yield.

(c) Subsection (a) does not apply under the conditions stated in § 55-8-135(b).

(d) Whenever any vehicle is stopped at a marked crosswalk or at any unmarked crosswalk at an intersection to permit a pedestrian to cross the roadway, the driver of any other vehicle approaching from the rear shall not overtake and pass the stopped vehicle. 🐾

ACTIVE SHOOTER AWARENESS

by Lilly Gilkey

I recently attended our neighborhood watch meeting at Crump Station where an Active Shooter Awareness Class was presented. I left the meeting feeling sad that our society has reached a point where we have to be vigilant at all times. We're vigilant when returning home, watchful of our surroundings and of who might be hiding in our driveways or walking up and down our street. And to add to that, we now have to be vigilant while out shopping in our supermarkets, on our jobs, and even in our church worship services.

However, I left this meeting with a sense of empowerment. I realized that I can't lock myself in and live the life of a recluse. Life goes on. I have to prepare myself and my family to be ready for the "What ifs."

What if I'm in a situation that I need an immediate escape?

In our class we were taught to:
'RUN, HIDE, FIGHT.'

RUN!

• Look for at least two exits when entering a building

- Escape: Leave belongings behind.
- Help others if you can
- Evacuate (even if others don't follow)

HIDE!

- If there is no place to run, HIDE
- Barricade all entryways
- Lock all doors and turn off all lights
- Turn off cell phones
- Stay put until law enforcement gives ok.

FIGHT!

- As a last resort FIGHT!
- Use makeshift weapons (chairs, books, anything accessible)
- Be aggressive (scream, throw things, etc)

AFTER THE EVENT:

- Call 911 when feel you are no longer in danger
- Try to remain as calm as possible and do not yell or scream at law enforcement
- Follow law enforcement directions
- KEEP HANDS VISIBLE, EMPTY, AND
- NO QUICK MOVEMENTS!
- Provide as much information as you can: Where the shooter is, description, how many shooters, types of weapons, etc. 🐾

TAX FREEZE

WHAT IS TAX FREEZE?

The Tax Freeze Program was created to help seniors (65 and older) by freezing the tax amount on their primary residence for future years. Mobile homes are included. For additional information, download the latest Tax Relief-Tax Freeze Brochure (PDF).

DO I QUALIFY FOR TAX FREEZE?

- Are you 65 or older?
- Do you own and live in a home in Shelby County that is your primary residence?
- Is the total income for you, your spouse, and all parties listed on your property deed less than \$39,250 for 2018? Legislation requires the income of the applicant's spouse to be included, regardless of ownership and regardless of whether or not the spouse is living on the property.

You may be eligible for Tax Freeze in 2019 if you answered "yes" to ALL.



Beware. There is always a catch. It sounds too easy and too good to be true. These companies are making money by taking advantage of your situation. Your best bet for selling your home is to go through a reputable full-service brokerage. Don't let the fast cash-buyer make a fast buck off of you. Chances are they will most likely turn around and resell your home to a conventional buyer for a higher sales price. 🐾

APPLY FOR TAX FREEZE

If you are a new applicant this year, the Tax Freeze Program will freeze your 2020 taxes based on the property tax amount for 2019.

Improvements to the primary residence (such as adding a room, carport, or garage) will result in a "proportional increase" to the frozen base tax amount. Certain land use restrictions may make a portion of the property ineligible.

To apply for Tax Freeze on 2019 taxes, please contact Trustee Customer Service at 901-222-0200 to receive an application. The deadline to apply is April 6, 2020. Signed applications must be postmarked no later than April 6, 2020 for all entities, except for the City of Memphis (the deadline for the City of Memphis is October 7, 2019). In addition, please provide a copy of your tax return or contact our office at 901-222-0200 to request an affidavit to verify income if no tax return is available. 🐾

Be Responsible!

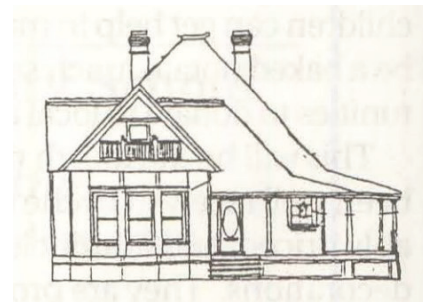
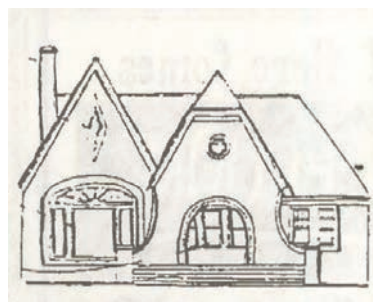


Leash, curb and clean up after your dog



LANDMARKING VECA: LANDMARKS DESIGNATION, A TOOL FOR NEIGHBORHOOD PRESERVATION

by the VECA Historic Committee



Vollintine Evergreen is its residents, its buildings and its natural and public spaces. From 1997 to 2007, volunteers working through VECA successfully got most of the neighborhood designated on the National Register of Historic Places. Vollintine Evergreen's four National Register Historic Districts reflect successive building periods in the 20th century of its more than 2,000 homes and buildings.

The National Register is an honorary designation that recognizes the architectural value and social history of Vollintine Evergreen. It is important to point out, however, that this does not protect historic buildings or homes from demolition, nor can it prevent new development that is out of character with the historic architecture of the neighborhood.

The need for investment and wanting to preserve community is a tough balancing act. Cities across the nation struggle with this challenge. One of the best tools for preserving historic areas is local Landmarks designation. Each neighborhood has its own set of design guidelines that it adopts to govern demolition, new construction, and rehabilitation. Residents of each neighborhood determine what types of activities are addressed in their guidelines. All people, regardless of income, should have the opportunity to protect and preserve the history, architecture and social fabric of their community. This is very different from what's going on presently in non-landmarks neighborhoods where developers are coming in, tearing down existing houses and rebuilding multiple units that don't match the existing street scape in scale, architecture or massing. Local Landmarks status will prevent this.

Two years ago, VECA neighbors came together to explore the possibility of VECA obtaining Landmarks Designation which is one of the best tools available for preserving historic areas. The City of Memphis currently has 16 diverse neighborhoods that are landmarks districts. Each neighborhood has its own set of design guidelines that it adopted to govern demolition, new construction and rehabilitation.

In the spring of 2019, the VECA Historic Committee invited neighbors for a series of talks that told the story of the people, urban planning, architecture, and green spaces in Vollintine Evergreen, as well as the development from the early days of dairy farms to the cohesive, vital neighborhood that the neighborhood is today. This effort was funded thru a grant from Community LIFT.

The committee has also completed the daunting task of reviewing the guidelines of the 16 Landmarks Districts in Memphis. The next task is to determine what guidelines make sense for the Vollintine Evergreen neighborhood. Guidelines will consider what type of new construction fits appropriately into the neighborhood. Projects before designation status will be grandfathered in. A grant from the State of Tennessee for \$7,500 will fund consulting work to help with the process of writing the guidelines.

THE STEPS

1. Publish draft guidelines in the V&E Newsletter including an article on benefits, limitations and potential impacts of district designation.

2. Hold a public hearing on proposed district boundaries and guidelines – Spring of 2020.

3. Submit an application to the Memphis Landmarks Commission (MLC).

4. If the application is approved by MLC, the process advances to the Land Use Control Board and City Council for hearings and approval.

Getting Landmarks designation requires that there be significant public information and property owner notification, including, at a neighborhood public meeting. According to the Memphis Landmarks Commission's bylaws, one public meeting must provide information on the proposed district boundaries, design guidelines and design review process. Before any meeting can be held, a set of draft guidelines must be developed and made available to community residents before the first public presentation.

Based on the public hearings, if there is consensus, a neighborhood can decide to move forward with an application. As part of this process, property owners in the district must be notified of the proposed designation. The design guidelines and designation must then be approved by the Memphis Landmarks Commission, and then by the Memphis and Shelby County Land Use Control Board and City Council.

After the designation goes into effect, property owners must get approval in the form of a Certificate of Appropriateness (COA) from the Landmarks Commission for any activities addressed in the design guidelines. The guidelines address

the view from the street, for the most part. For demolition and new construction, this is triggered when owners or their contractors apply for a building or demolition permit. The Landmarks Commission will review the proposed activity according to standards in the design guidelines and work with the owner or developer to meet the standards. While the COA process takes a little more time, it helps ensure that the demolition or new development is appropriate.


The sixteen (16) Landmarks Districts in Memphis:

1. Annesdale Park
2. Annesdale Snowden
3. Central Gardens
4. Collin's Chapel
5. Cotton Row
6. Evergreen
7. Gayoso-Peabody
8. Glenview
9. Lea's Woods
10. Maxwellton
11. Rozelle-Annesdale
12. South Main
13. Victorian Village
14. Cooper Young
15. Speedway Terrace
16. Withers Home,

17? VECA

*Church of the
Good Shepherd*

An Episcopal Church
Organized in Memphis in 1865



My sheep hear my voice, and I know them, and they follow me: And I give them eternal life. -John 10:27

Church of the Good Shepherd
The Rev. William N. Fry III, Rector
1971 Jackson Avenue
Office: 901-725-9768
Services: Sundays, 7:30 and 10:30 am
Wednesdays, 10:30 am

"A lifetime of community involvement with neighbors and community groups taught me that its about listening to the community first, and must be followed up by passionate advocacy on their behalf. I recognize that a better future only comes through action in the present, and together we can build the communities our children deserve."

OUR Campaign priorities:

1. *Safe Communities:* Working to decrease crime and strengthen opportunity in our communities will need reentry programs, more youth services, and full benefits for first responders.

2. *Improved Housing:* Let's fight to reduce blight by targeting absentee landlords, increasing new developments, and creating new paths to home ownership.

3. *Economic Opportunity:* Access to employment and economic security is the foundation of a thriving community. Let's build our community's workforce, pursue investments into local businesses, and push for labor and trade representation in city projects.

**RUNOFF ELECTION FOR CITY COUNCIL DISTRICT 7
 RUNOFF EARLY ELECTION OCTOBER 25-NOVEMBER 9
 RUNOFF ELECTION DAY- NOVEMBER 14**



INVESTED DISTRICT RESIDENT **NON PROFIT FOUNDER**
PUBLIC SCHOOL EDUCATOR **COMMUNITY ORGANIZER**

— Michalyn —
EASTER-THOMAS
 CITY COUNCIL DISTRICT 7

www.michalynformemphis.com | 901-721-7667 | [f](https://www.facebook.com/measterthomas) [i](https://www.instagram.com/measterthomas) [t](https://www.tiktok.com/@measterthomas)


Paid for by the Friends of Michalyn Easter-Thomas, Bianca Cooper Treasurer

vollintine evergreen means business.

We are a neighborhood with untapped potential and unprecedented growth. A study conducted in 2010 found that Vollintine Evergreen had over \$315,000,000 in disposable income. Residents have the capacity to spend over \$200,000,000 annually on retail goods and services.

We hope you will take the opportunity to use this potential by investing in the Vollintine Evergreen News. Our quarterly newsletter has been serving VECA's neighborhood since 1970. Circulation of 3,000 reaches homes, businesses and church communities within the Vollintine Evergreen area. The newsletter is a great investment, cost efficient, and is available in print or online at VECA.org.

If you are interested in advertising with us, contact Chloe Elam (chloe.lane.elam@gmail.com) for pricing and more information.



ESTD 1987

SAINT JOHN ORTHODOX CHURCH
 ANTIOCHIAN ARCHDIOCESE OF NORTH AMERICA

St. John Orthodox Church
 Sunday
 Orthos at 9 am, Liturgy at 10 am

Weekdays
 Wednesday Vespers at 6 pm
 Saturday Vespers at 6 pm

1663 Tutwiler Avenue
 at Dickinson
 (901) 274-4119
www.stjohnmemphis.org

Mary Frances Vookles Pitts * 901.355.5038 * agentp@comcast.net * Marx-Bensdorf Realtors

I sell houses. It's what I do! Call Me!

Agent Pitts 901-355-5038

Marx-Bensdorf 901-682-1868

233 Alexander • 5 Alicia • 5378 Alladin • 5680 Angela N • 274 Angelus • 287 Angelus • 243 Angelus • 1780 Applin • 26 Ashlawn • 1092 Audubon • 2526 Autumn • 434 Avalon • 4772 Aynsley • 580 Barksdale • 800 Beauvoir • 4228 Belle Meade Cove • 4237 Belle Meade Cove • 4271 Belle Meade • 574 Belvedere • 1849 Belvedere • 672 Belvedere • 6572 Bramble Cove • 1281 Bray Park • 250 Bremlington • 218 Brenrich Cv 219 • 219 Brenrich Cv 219 • 3780 Cardinal • 75 Carlos W • 1509 Carr • 1576 Carr • 1555 Carr • 1563-65 Carr • 1865 Carr • 2009 Central • 1426 Central • 1644 Central • 2847 Central • 347 Central Cove • 4233 Central • 698 Charles Place • 758 Charles Place • 816 Charles Place • 822 Charles Place • 3740 Central Square • 4221 Charles Square • 69 Cherokee • 88 Cherokee • 104 Cherry • 196 Cherry • 41 Cherry • 482 Cherry • 54 Cherry • 546 Cherry • 55 Cherry • 4374 Cowden • 343 Chuckwood • 4669 Cole • 5476 Collingwood • 585 Country Club • 2219 Court • 2095 Courtland • 2006 Cowden • 1849 Cowden • 3213 Cowden • 1915 Cowden • 2116 Cowden • 999 Cowden • 3149 Cowden • 3205 Cowden • 3209 Cowden • 3616 Cowden • 791 Cypress 800 • 800 Cypress • 159 Devon • 2 Devon • 674 East • 2355 Eastwood • 2202 Edgewood Cove • 1858 Felix • 5521 Fiesta • 212 Florence • 164 Forest Grove Cove • 1617 Forrest • 1630 Forrest • 1693 Forrest • 1694 Forrest • 1696 Forrest • 104 Forrest • 9799 Frank Road • 3345 Galloway • 107 Galloway • 4001 Galloway • 4026 Galloway • 4008 Galloway • 4001 Galloway • 107 Galloway • 5545 Glen • 1730 Glenwood • 1390 Goodbar • 1430 Goodland • 552 Goodland • 104 Goodlett N • 65 Goodway Lane • 294 Goodwyn • 425 Goodwyn • 227 Goodwyn W • 693 Grand • 4221 Grandview • 8238 Green Gate Cove • 6639 Green Shadows • 241 Greenway • 460

Vookles Pitts * 901.355.5038 * agentp@comcast.net * Marx-Bensdorf Realtors * 901.682.1868 * Mary Frances Vookles Pitts * 901.355.5038 * agentp@comcast.net * Marx-Bensdorf Realtors